

2002 CSEG ANNUAL REPORT

Canadian Society of Exploration Geophysicists
 905, 510 - 5th Street S.W., Calgary, Alberta T2P 3S2



2002 EXECUTIVE

J. Douglas Uffen	President
William N. Goodway	Vice President
Kenneth V. Allen	Director of Educational Services
Penny Colton	Assistant Director of Educational Services
David Siegfried	Director of Finance
Doug Bogstie	Assistant Director of Finance
Chris Irvine	Director of Communications
Ron Larson	Assistant Director of Communications
Gary R. James	Director Member Services
David C. Wardlaw	Assistant Director Member Services
Randy Pelletier	Past President

TABLE OF CONTENTS

Page No.

Executive Reports

President	II
Vice President	IV
Director of Educational Services	VI
Director Member Services	VII
Director of Finance	VIII
Director of Communications	VIII
Managing Director	IX

Financial Statements	X
---------------------------------------	----------

Committee Reports

Chief Geophysicists' Forum	XXI
University of Calgary Chair in Exploration Geophysics Committee	XXI
Continuing Education Committee	XXII
2002 CSEG National Convention Committee	XXIII
CSEG-APEGGA Advisory Committee	XXIII
Doodlebug Committee	XXIV
Doodlespiel Committee	XXV
Outreach Committee	XXVI
RECORDER Committee	XXVI
Scholarship Committee	XXVII
Seismic Data Task Force	XXVIII
Ski Spree Committee	XXIX
Web Site Committee	XXIX

CSEG Achievements	XXX
------------------------------------	------------

Corporate Members	XXXII
------------------------------------	--------------

E X E C U T I V E R E P O R T S

President

Overview

It has been a pleasure and an honour to serve the society as President this past year. It has also been a pleasure to work with such a dedicated and conscientious group of individuals on the Executive. The expanded Executive, comprised of Directors and Assistant Directors, was able to tackle several initiatives and projects this past year. This Executive has laid the foundation for the future growth of the society and initiated several projects aimed at growth.

What You May Have Noticed

Some of the initiatives conducted by the Executive this year have been visible to the membership. The RECORDER continues to be a flagship publication for the society. The membership has provided positive feedback regarding the quality of this product, and vendors seeking to place advertisements in a highly regarded publication are also voicing their appreciation. Advertisement rates were raised in September to reflect this increased quality. The RECORDER is currently subsidized by the society with hopes that it will reach a break-even scenario in 2003.

Our monthly luncheons moved to the Telus Convention Centre this year. This initiative was required as the Westin Hotel would no longer permit us to book our luncheons more than 3 months in advance and guarantee us the dates requested. Some of our luncheon speakers are from international destinations and require several months advance notification and travel plan preparation to stop over for an extra day while in Calgary, in order to present their talk. While attendance is ten percent lower at the new venue, the slight cost increase observed in 2003 is reflective of the venue change and not attendance levels.

The Doodle Train was a new initiative conducted by the Continuing Education Committee. In November, 350 members attended one of the twenty courses offered last fall. The event was highly supported and appreciated by the membership. It was also a significant financial success. The Doodle Train will become a new annual event for the society.

The annual convention was held in May at the Telus Convention Centre. Delegates, Exhibitors and sponsors all enjoyed this year's event. The Convention Committee did a terrific job handling the budgets for this trade show and realized a significant profit above their previous guidance. Such financial management provided the Executive more budgetary freedom this fiscal year and permitted the Executive to invest monies in initiatives like the Doodle Train.

The website www.cseg.ca has been updated and is now current with the latest societal information. I encourage all of you to check it out and make use of the membership directory services. Last fall, the website was used as a communication vehicle to the membership regarding the Kyoto Accord. After the Executive, along with the Past Presidents and the Past President's Council, all supported the issuance of a position letter on the Kyoto Accord, it was upon my request that the membership be polled for their opinion, prior to any public political action being conducted by the society. In the future, the website may be used to solicit membership feedback on a series of topics or be utilized to conduct member surveys. It is important that your correct contact information be registered with the CSEG office in order to participate in such initiatives.

What You May Not Have Seen or Known About

The Executive has taken many steps to provide some structure and organization to the society in support of the motto, "Run it like a business". A business is an entity with which all volunteers are familiar. Due to this familiarity with how a business works, it permits all volunteers to easily step into their role to fulfill their function. Every business has some structure. The CSEG Organizational Chart, first published in March 2002, has assisted the Executive, volunteers and members appreciably, by clarifying the various roles, duties and responsibilities of the Executive Directorships.

The new Committee Operating Procedures document was a year and a half in the making and was implemented in November of last year. This document clarifies the relationships and expectations of our numerous committees and the Executive. The document serves to provide structure, guidance and assistance to future volunteers. It will be yet another way that the society makes it easier for our busy members to contribute their valuable volunteer time.

The Executive has made minor changes to our bylaws, which are being proposed to the membership at our upcoming Annual General Meeting in March. These minor changes reflect our new structure and member services. The society's Code of Ethics has also been revised without changing the spirit, values or ethics of the document itself. Non-professional and professional members of the society expressed a concern regarding non-professional members signing a document that referred to the undersigned as being geophysicists. Essentially the minor changes proposed, which are subject to membership approval at the Annual General Meeting, permit the undersigned to accept the code of ethics as a member of the society rather than exclusively as a geophysicist. These two initiatives are best perceived as minor updates to pre-existing documents required to accurately reflect the society as it is today.

Corporate Membership Services were revisited this past year with the intent to provide more value to those corporations supportive of the society. It is believed by the Executive that these enhanced services far outweigh the cost increase to be reflected at corporate membership renewal time in the summer of 2003.

Numerous initiatives were taken by the society with respect to finances this past year. The year 2002 marks the first full year that Association Plus kept our financial statements. This professional accounting service has increased the quality and accuracy of our financial statements, an essential element for any "business". A monthly budget and cash flow statement was implemented this year to observe cash flow patterns and to assist with budgetary forecasting and the management of reserve funds. The society is in the midst of changing banks commensurate with engaging Rhind & Associates to handle our GIC deposit investments. Rhind & Associates is able to receive higher interest rates for its collective clients through the National Bank. All deposits are in the name of the CSEG and are held directly with the National Bank. Bad debts and past invalid invoices from years ago were written off this year to provide a "clean slate" for 2003. The society also subscribed for a credit card to consolidate minor expenditures and reduce bank fees.

What Is "In the Works?"

By the time this report is published, the Executive will have likely put the finishing touches to some additional projects. A Committee

President continued

Mandates document has been in creation. The document outlines the purpose and mission statements for our numerous committees and clarifies which Directorship is responsible for correspondence and communication with each committee. The society's Procedures Manual had not been updated since 1997, prior to our latest Bylaw revision. The Procedures Manual is being updated with the new titles, roles and responsibilities for each Executive member. These two documents are the last two elements required to put our structure in place. Clarifying our structure will assist all volunteers and it will make it less onerous for the Executive Committee member to contribute their valuable time.

The society is currently investigating the formation of a joint committee between the CSEG, CAGC and the CAPP geophysical sub-committee to promote the Industry Line Registration Number (ILRN) initiative. This initiative, originally developed by the Seismic Data Standards committee, proposes a universal solution to the data management issue of alias line names for newly acquired seismic lines.

The society posted a healthy profit this year largely due to the successful financial efforts of the convention, the Doodle Train event and the prudent fiscal management of this year's Executive Committee. The Executive Committee directed these profits towards increasing the society's reserve fund, the purchase of a laptop computer and projectors for the luncheon, updating computer hardware, software and furniture in the office, and revamping the website. This will alleviate budgetary pressure during 2003 and permit the next Executive Committee to have some flexibility and financial discretion.

The Executive Committee made the decision in the fall of 2002, to expand the "business" and hire a second employee. Sheryl Meggeson, a CSEG member, was hired in January of 2003 as an Administrative Assistant / Coordinator, reporting to Jim Racette, our Managing Director. Sheryl's organizational skills and marketing background can assist all our volunteers with the planning, scheduling and promotion of our numerous events. Many thanks go to Debbie Bradley who assisted us on a contract basis in the office for the last year and a half. We wish Debbie the very best in her new endeavours.

The Executive Committee is currently developing a Long Range Plan for the society as a reference document for future Executive Committee members. The document attempts to lay out a strategic plan for the future growth of the society. It serves as a focus for discussion and future prioritization of budgetary capital. Even in its current draft form, the document has served to provide insight and thought provoking ideas for the budgetary operating surplus from 2002. It will assist future Executive Committees to identify projects worthy of financial investment or acceleration during years of windfall profits.

Summary

Our society is a million dollar "business", even though it is a non-profit society. Like any business, it is essential to have suitable structures, processes and systems in place in order to fulfill a primary objective. Our society's primary objective is to promote the science of geophysics and to promote fellowship and co-operation among its members. Our revised societal documents, bylaws, manuals, financial statements, and operational procedures reflect the structure and process now in place to fulfill our primary objective.

Businesses are designed to make money: - to post a profit. Although the society is a non-profit organization, if we continued to post financial losses, insolvency would result. If every committee budgeted to break even on the year, the society would not be able to cover its basic operating costs. It is not a sin to make money, but to maintain the society's non-profit status, it is essential to re-invest those monies in the

society, either to provide more services to the membership, or to increase the quality of the services currently offered. Please note the use of the word "invest" as opposed to "spend". In the past, the society created the Superfund to "spend" windfall profits on projects deemed worthy of financial support. With the implementation of a Long Range Plan, the society will be able to identify, prioritize and perhaps accelerate projects that provide new value to the membership. The society will have the financial flexibility and capacity to "invest" windfall profits in expanded services and improve pre-existing services, this model does not threaten our non-profit status. This is a significant paradigm shift for the society, one that makes this fiscal year a pivotal year for the society. The stepping-stones are now in place so that the society can grow and be current with the times.

This year the Executive Committee expanded member services by offering a new event, the Doodle Train. The seed capital investment for this initiative was made possible by the financial success of the Convention Committee. The Doodle -Train was an unprecedented success. The financial profits from the Doodle Train have been used collectively with those profits from the convention to accomplish many things. Our reserve funds have been increased. The website has been updated and will be revamped next year. The society has purchased a laptop computer and two projectors for our monthly luncheons. Computer hardware, software and furniture in the office will be updated. All of these expenditures are investments in the society for the benefit of its members.

The success of the Doodle -Train has fulfilled another purpose for the support of this project. In the past, exhibitors at our annual convention have felt that the society has been built financially from the support that they have provided at our annual convention. In the last few years, higher delegate fees have been charged to members attending the annual convention to balance the revenue flows from a convention between exhibitors, delegates and sponsors. The Doodle -Train provides a new revenue source for the society, offering services at very competitive rates. It also decreases the society's dependence upon the annual convention. It also provides a new cash flow source in the fall when the society tends to spend more money than it receives. Diversifying the revenue base of the society through the creation of enhanced member services is the focus and purpose of a strategic plan such as our Long Range Plan.

The society is much stronger financially today than a year ago. Operationally, the society has more structure and organization which, is a requirement of an entity of this size. The initiatives taken this year, along with our expanded office staff, will help the society to go to the next level. It is possible to grow yet maintain our non-profit status.

The society is an exciting place to be. I encourage all of you to consider volunteering on a committee. It is a great way to meet new people, support the society and have fun. It has been a pleasure serving you and the society this past year as President. I look forward to my next year as Past President.

DOUG UFFEN, P. Geoph.
CSEG President 2002/2003

When my three-year term is completed, I have but one request of the society. I would like to take a brief sabbatical and volunteer again, only this time as the distribution person in charge of free Icebreaker drink tickets: - an expanded member service.

Vice President

2002 was a busy year for the Executive with a lot of productive and successful CSEG committee activity. I feel honoured by and enjoyed the opportunity to serve as Vice President, especially given the enthusiasm and motivation of my fellow Executive members and Jim Racette, the CSEG Managing Director. I must thank Jim and the entire Executive for having helped me fulfil my mandate as Executive liaison with my reporting committees. These committees were very active with frequent meetings and a lot of fruitful discussions and ideas. The result is that a number of new initiatives are currently at various stages of completion, and despite some roadblocks, I am confident that they will all succeed for the benefit of the Society membership.

What follows is a short summary on each of the reporting committees that I had responsibility for and whose activity I monitored by attending full committee meetings as well as meeting with individual committee chairs as frequently as I was able to.

Data Standards

Under the chairmanship of Jan Hay, this committee has identified three major areas that need to be addressed and compliments the work of the PPDM Association's seismic data exchange workgroup. One result of this is that the CSEG became a contributing (non-funding) member of the Association last year. The initiatives consist of:

1. Data Transfer/Ownership focusing on issues around eligibility and verification in support of the on-going Master License Agreement (MLA) implementation task force (see below).
2. Database Field names concerned with reference value tables (in conjunction with PPDM).
3. Industry Line Registry Number (ILRN) that will serve as an industry-wide standard unique identifier with savings in divestiture/acquisition activity and efficient tracking of associated legal/environmental issues.

Initiatives 1 and 3 are in their final draft form as working documents that will be presented to the Executive prior to the end of my term as Vice President. The second initiative is also being addressed within the PPDM Association's workgroups. In addition to these efforts, along with Doug Uffen, we were able to secure a seat for a representative from this CSEG committee on the CAPP Geophysics Committee. Jan Hay reported on the current and on-going status of these initiatives at the November 2002 luncheon and there will be further updates in 2003.

Geophysical Professional Development Centre

This interactive PC training facility was officially launched last year. Since its start-up there have been 10 courses offered with attendance numbers ranging from 8 to 30, representing 53% to 100% of maximum capacity. Under the continued and enthusiastic leadership of Rudi Meyer and his technical advisory committee made up of CSEG and CSPG members, the facility has attracted a wide range of course topics from "Evaluation of Oil & Gas Properties for Geoscientists" to "Introduction to Geostatistical Reservoir Modelling". I believe that in its first year the GPDC has proven its worth to the membership in providing alternative courses outside of mainstream Geophysics, justifying the initial \$10,000 CSEG contribution. In the future I hope that this facility continues to improve in both the variety and number of cross-disciplinary courses offered.

University of Calgary Chair in Geophysics

The Chair in Exploration Geophysics changed hands in 2002 with the end of Dr. Larry Lines' extremely successful five-year term and his election as head of the Geophysics and Geology department at U of C.

As a consequence of funding restrictions, both with the Chair endowment and at U of C in general, the potential Chair candidates had to be restricted to the Geology and Geophysics department. Despite this limitation an excellent list of candidates competed for the position and Dr. Don Lawton was elected as the Chair's successor for the next five-year term. Recently Don gave an inaugural speech outlining his view of the research direction, national and international collaboration and challenges that he plans to tackle. Given the impressive scope and depth of Don's plans for raising the level of research at U of C, I expect we will see continued benefits in new technology and ideas to the Canadian industry and CSEG membership.

However there is still a serious issue with the continued under-funding of the Chair that requires, at a minimum, an additional \$40,000 per year to maintain a full time position. As a result the Chair committee under the direction of Neil Rutherford initiated an industry wide "Friends of the Chair" pledge campaign that has been promoted at a number of venues including CSEG luncheons, Chief Geophysicists Forum and internal company conferences. This campaign is on-going and if you have not donated yet I hope you do so soon, as the Canadian industry benefits significantly from both the local and international educational and research activity generated by the position, as evidenced by Dr. Larry Lines' tenure. Pledge forms are available by emailing Jim Racette at the CSEG office.

Chief Geophysicist's Forum (CGF)

I attended a number of CGF meetings run under the proficient direction of Graham Millington as the committee chair. Discussion at these meetings was lively and useful with topics ranging from dissemination of information, such as the "Friends of the Chair" pledge campaign and the Doodle Train, to more contentious issues such as the MLA's data room code of practice. The MLA has had the most debate during the year and the next few months will hopefully see more agreement between the wide cross-section of variously sized O & G companies, resulting in more signatories. In this regard Graham has been instrumental in maintaining a consistent focus to achieve a clearer understanding and endorsement. This on-going task is also well supported by members of the CGF including John Boyd and his standing committee (see next report).

Master License Agreement Standing Committee

John Boyd has taken up the on-going MLA standing committee chairmanship to address specific concerns of prospective industry users and CSEG membership. In this task John has created a sub-committee with wide industry representation to obtain a better understanding of the concerns that are restricting further uptake of the MLA. Graham Millington has supported these efforts through a close connection with the discussion within the CGF and as a result key issues have been identified and are being focused on for resolution. During a number of informal meetings with both John and Graham I have been impressed by the volunteer effort to bring the benefits of licensing standards to the membership from a document such as the MLA. Without the persistence of these volunteers there would be a lot less value in belonging to the CSEG.

Vice President continued

In addition to the efforts of John's committee a milestone was reached in 2002 as the APEGGA Council passed two motions with regard to the CSEG request for MLA support, these being:

1. APEGGA will fund the costs of the MLA in the amount of \$15,000 to cover CSEG costs to date.
2. APEGGA will refer the MLA document to the Practice Standards Committee for review in support of new APEGGA initiatives in Practice Standards regarding the professional use of geophysical data.

This result came about through the efforts of Ken Mitchell (APEGGA liaison) and Rob Stewart (APEGGA Council member) and I wish to thank them both for their determination to obtain such a strong APEGGA endorsement.

CSEG 2002 convention and CSEG/CSPG 2003 joint convention

The CSEG convention in 2002 was a huge success. Convention chairman Andy St. Onge and his committee must be congratulated for their efforts in creating such an exceptional convention. The organisation was flawless, with the technical content and session topics being well above any expectations. The consequences of this were reflected in both the strong attendance (over 2000) and prudent cost efficiencies (net profit > \$200,000). As a result this convention set a new standard for future expectations and the potential of a standalone CSEG convention. One of the suggestions from the 2002 committee was to hold permanent joint CSEG/CSPG conventions. Though this is clearly an idea that has value in promoting cross-disciplinary geoscience, there are some revenue and cost sharing risks that always threaten to derail these joint conventions. However the positive dialogue between the current CSEG and CSPG Executives has overcome a number of perceived hurdles and joint conventions may occur more frequently i.e. every two years as opposed to four.

Accordingly, this year the CSEG will host a joint convention with the CSPG and the organising committee under the CSEG leadership of Jim Stenhouse, is well into its final planning stage with a number of exciting new ideas for cross-disciplinary sessions.

Geotechnical Support

This committee is responsible for encouraging technical interaction and initiating specialised training for the membership involved in geophysical technical support. Unfortunately I have not had a chance to meet with the committee under the direction of Lisa Michetti. However, through discussion with Lisa, I can report that considerable time and effort was given to supporting the Doodle Train week in creating a number of useful and well-attended courses aimed at technical support staff. I hope to regenerate a stronger connection with this committee in my remaining term and in supporting the succeeding 2003 CSEG VP.

Observations and Reflection

Running the Society and its activity as a business is a goal that has been successfully implemented and managed by my predecessors Randy Pelletier (VP 2000) and Doug Uffen (VP 2001). In conjunction with their respective Executive members, a number of hurdles were overcome to create the efficient and profitable Society that you see today. My task as VP and as President in the future has been made considerably less onerous given the structure that has been implemented. My challenge as incoming President is to maintain the prudent fiscal policy and committee initiative momentum generated by my predecessors.

This being said I do feel that one major aspect of the CSEG mandate, "To promote the science of geophysics especially as it applies to exploration," is running the risk of being overlooked. One reason that this might be occurring is a function of a larger trend in the seismic industry worldwide to run all activity as a business. The trend is driven by the same concept of cost efficiency, whether this is oil company or contractor merger mania, the general lack of interest in research within the industry excepting academia, or the lack of profitable activity despite high oil and gas prices. I hope that we may soon see the beginning of a reversal of the effects of these pessimistic and demoralising tendencies. In this regard I aim to encourage the scientific zeal amongst Canadian geophysicists to push the technical envelope through experimentation with less focus on the bottom line. I believe that the current apathy I sense in our industry stems primarily from the undervaluation of technology and research in the culture of most Canadian oil and gas companies, irrespective of size. As I indicated in my article in the June 2002 RECORDER, I still feel that I have a mission to bring the spontaneity and enthusiasm for the science back to applied geophysics, as practised in the Calgary oil patch.

BILL GOODWAY
Vice President 2002/2003

Director of Educational Services

It is my pleasure to report that the portfolio of Educational Services, like the CSEG in general, has had a very good year in 2002. Advances and improvements were achieved on many different new initiatives and pre-existing issues. Of course, this would not have been possible without the efforts of the numerous volunteers that give of their time to help the CSEG be the successful and dynamic organization that it is. To all who contributed, in one form or another, to the success of the CSEG's Educational Services, and to the Society in general, thank you very much and congratulations on a job well done. I would also like to take this opportunity to acknowledge and wholeheartedly thank the Assistant Director of Educational Services, Penny Colton, for all of her efforts and hard work during this past year, without which this portfolio's results for 2002 would not have been achieved.

Monthly Technical Luncheons

Our Monthly Technical Luncheons had another successful year (despite ongoing booking problems at the Westin Hotel in Calgary, Alberta), and managed to turn a small profit for the Society. I would like to very much thank all of the luncheon speakers for 2002; they provided us with a series of very interesting, informative and quality talks. Information about all of these luncheon talks, and those of many prior years, is available on the CSEG website.

In order to address the ongoing venue booking issue, we moved our luncheons to a new venue in September and they are now being held at the Telus Convention Centre in Calgary. Although the new location is not as centrally located in the Calgary downtown core as the old location, the change now allows the CSEG to have a guaranteed date for its technical luncheons a full year in advance. This change of venue has several benefits including providing better advance planning and speaker booking opportunities, providing a larger audience capacity, being able to post the upcoming year's technical luncheon schedule on the CSEG's website ("Forthcoming Luncheons" button on our homepage) and making it easier for our members who do not live in or near Calgary to plan to attend particular technical luncheons of special interest to them, if they wish to do so, or as part of them being in Calgary for other reasons. Unfortunately, due to increased venue costs we have had to increase the price of our luncheon tickets slightly. However, we feel it still provides a very good value for the cost.

The following people and companies are gratefully thanked for their support:

- Lisa Eastman, Arcis Corporation, and Beverley Archdekin, Varidata Surveys Ltd., for handling the tickets sales.
- OYO Geospace Canada Inc. and Input/Output Canada Inc. for their generous donation of the cut-away geophones used for the speakers' mementos.
- WesternGeco and Geo-X Systems Ltd. for lending their computer projectors to the CSEG for the luncheons, saving us about \$1,000 for each luncheon.
- Twenty-two companies for sponsoring tickets for students from the University of Calgary and the Southern Alberta Institute of Technology: Arcis Corporation, Capella Exploration Services Ltd., Conoco Canada Limited, Earth Signal Processing Ltd., Encana, Excalibur-Gemini, Felix Geophysical Services Inc., Geo*Tir, Geo-X Systems Ltd., Hampson-Russell Software Services Ltd., Jason Geosystems, Kelman Technologies Inc., Koch Petroleum Canada, Nexen, Paradigm Geophysical (Canada) Ltd., Seiscraft, Sensor Geophysical Ltd., Sigma Exploration Inc., Talisman Energy Inc., Teknica, Varidata Surveys Ltd., and Veritas GeoServices.

National Convention - Technical Program

The Technical Committee for the 2002 CSEG National Convention did a great job of providing us with an interesting and challenging technical program at the convention, well done. See the Annual Convention report that is part of this CSEG Annual Report.

CSEG Best Paper Award

The CSEG gives a "Best Paper Award" each year for the outstanding paper, article or talk from the Journal (or equivalent), the RECORDER, and the Technical Luncheon talks. The CSEG National Convention award winning talks and poster papers are also in the selection process. The 2002 CSEG Best Paper Award will be announced at a later date.

Continuing Education

The 2002 SEG/EAGE Distinguished Instructor Short Course was held in Calgary in March, featuring Dr. Leon Thomsen from BP Amoco in Houston, Texas. Dr. Thomsen's Short Course was titled "Understanding Seismic Anisotropy in Exploration and Exploitation".

Focusing upon our current membership, the Continuing Education Committee, which is chaired by Bill Nickerson, is chartered to identify and offer courses, forums and programs of interest to the professionals and non-professionals within the membership. This committee is involved in the CSEG National Convention and offered several field trips as part of the convention program. In November 2002, this committee staged what is now planned to be an annual event in Calgary, the "Doodle Training Week". Many courses were offered during that week and this event was very well received by the CSEG membership. From the feedback of those who attended the courses, it appears that this initiative provided a very valuable service to our members and was a huge success technically and financially. We have received much encouragement to have similar events in the future. See their more detailed report that follows.

The relatively new Geoscience Professional Development Centre (GDPC) at the University of Calgary continues to offer courses to meet the training needs of post-degree, mid-career petroleum industry professionals in a broad array of cross-disciplinary geoscience topics applied to petroleum exploration, reservoir characterization and exploitation.

Outreach Program

A new committee became active in 2002, the "Outreach Committee". This committee is charged with the promotion of the geophysical discipline to high school and university students, their parents and the public at large. An additional responsibility for this committee includes the promotion of the society to non-seismic oriented individuals involved in the geophysical discipline so as to promote membership growth. The committee is also expected to reach out to the non-Calgary area members in Canada, and around the globe, to better support our members everywhere and to attract more membership. Barbara Young graciously volunteered to chair committee and got off to a great start with a number of new initiatives. See her report that follows.

Director of Educational Services continued

Scholarship Program

This committee is chaired by Mike Perz and is chartered with the promotion of the geophysical discipline by providing scholarships to individuals attending post-secondary education across Canada who wish

to study geophysics. They had another successful year in 2002 and we thank them for a job well done. See Mike's detailed report that follows.

KEN ALLEN

Director of Educational Services 2002/2003

Director of Member Services

On behalf of the Director of Member Services and myself, I would like to thank the members of the CSEG for their continued support of our Society. We would also like to add a special thank you to those members who have volunteered their time to the Doodlebug, the Doodlespiel, the Ski Spree, and the RECORDER.

In general

The past year has seen the executive concentrate on improving the finer points of its financial affairs, the society bylaws, and the committee operating procedures. The operating procedures document has caused some tension amongst the social committees, the executive, and between some of the membership of the CSEG; however, we have executed a document that for the majority has satisfied everyone.

A special thank you should go out to Neil Rutherford and Barry Korchinski, who acted as a liaison between the social committee chairmen and the CSEG executive. Without their hard work and the many meetings, we would never have come to an agreement. The operating procedures document essentially classifies committees as self-funding or CSEG funded, and still allows social events to be completely run by their own committees. A certain degree of reporting to the executive was mandated, and a set of standards for CSEG events was specified. With all the paperwork behind us, it is now time to move on and continue to enjoy those fantastic social events that are so well organized and attended by the CSEG membership.

The RECORDER

Congratulations and many thanks to Satinder and Oliver. If the general comments around the industry and the letters to the editors are any indication, the continued improvements and changes to the RECORDER over the past few years are very well received.

We must also thank the continued support of our advertisers. On behalf of all of our membership I would ask you to continue your support. Through improvements in the format of our monthly publication we hope that we are presenting your companies in the best possible light. To those companies considering advertising let me point out that the "CSEG RECORDER" offers the lowest advertising rates that I have encountered and goes directly to a concentrated audience of companies in the geophysical industry. It is well-spent money.

The Doodlespiel Curling Bonspiel

Congratulations to the Doodlespiel Committee Members for another sold-out event in 2002. Kelly Jamison's committee did a fantastic job and had a record number of curlers again. Instituting a 'hole plug' event was a great idea to bring more curlers up to Banff and allow everyone to participate in the curling.

The Doodlebug Golf Tournament

Steve Fuller and his crew rose to the challenge laid out before them for the 50th anniversary event. The souvenir DVDs and Doodlebug Times were a great idea to remind us of the wonderful history and tradition that our society has. Well done! The Doodlebug committee has set up a web site over the past year and I would encourage our members to visit it for full details and a history of this great event.

www.doodlebug.ca

The CSEG Ski-Spree

Another annual success story for our members! This family oriented event is held each February in Fairmont and the 2002 edition was another huge success. Congratulations to Oliver Kuhn and his horde of helpers.

Overall the society had a great 2002, and I look forward to serving the CSEG over the next year and concentrating on enhancing member services.

DAVID WARDLAW

Assistant Director of Member Services 2002/2003

Director of Finance

2002 has been very rewarding for the Finance Department (Dave Siegfried and Doug Bogstie) of the CSEG.

This year we developed a monthly and annual cash flow summary that has been a useful tool for monitoring revenues and expenses and the month the transactions occurred. After populating the model with some history we were able to determine some revenue and expense patterns and now we have a management tool that will help us look ahead at upcoming needs. This tool has also proven to be a valuable budgeting tool for 2003.

Next we have been able to take periods where the society has cash surpluses and manage them better to enhance our returns. Now, by identifying expense patterns, we are able to forecast when we need to have term deposits coming due to meet the society's expenses. We have implemented a system of cash management with the assistance of Rhind and Associates Ltd. who specialize in cash management. They have also enabled the society to realize better rates on our deposits. Rhind and Associate's fees are paid for by the National Bank of Canada, where our accounts and deposits are now located.

Another area we focused on this year was trying to minimize the bank charges assessed against the society. One way we have managed to reduce these is by the issuance of a credit card. Now we pay one invoice at the end of the month, which incorporates many cheques that would otherwise have to be written. This in turn has decreased our bank charges (in the past fees were paid on a per transaction basis, i.e. cheques written)

Finally, we undertook to handle some old accounting issues from the past. We had several old invoices, which had not been handled properly. We have undertaken to clean up these old accounting issues and now we are current. Today we have a better accounting system in place that helps us track our receivables and payables.

With our accounting in good hands and proper tools in place with which to look ahead, the Managing Director and the Executive are better positioned to efficiently manage the affairs of the society.

I would like to thank Jim Racette, as his knowledge of the affairs of the society have personally made my job easier; Wende Olsen of Association Plus, who has helped integrate our ideas into the accounting world, then made the tools we now have work efficiently; Matt Godfrey, our auditor, for his patience in explaining accounting principles to me; Doug Uffen and Bill Goodway for their direction; and finally, my co-worker in Finance this year, your new Finance Director for 2003, Doug Bogstie. Thanks Doug for your help and support this year. The society just keeps getting stronger every year!!

DAVE SIEGFRIED
Director of Finance 2002/2003

Director of Communications

Firstly, I wish to thank all the volunteers who have donated their time to the RECORDER and Website. These two communication vehicles have improved throughout the year. The increased technical content of the RECORDER has made it a worthy replacement for the CSEG Journal. The increased functionalities in the Website are making it a useful resource for our industry. If you haven't logged into our Website at www.cseg.ca then I suggest you do and take a look at it.

Secondly, the planned changes to the CSEG bylaws will hopefully be passed at this year's Annual General Meeting. This should be the last step in officially retiring the CSEG Journal. The Journal publication has suffered from a lack of articles as well as a heavy burden on volunteers and expenses. The RECORDER, with the improved technical content, is a valued replacement. The only drawback is that the RECORDER presently does not peer-review the articles, which can be a problem for certain academics who need such publications as part of their academic record. The SEG publication of Geophysics is relied on as such a peer-reviewed publication.

Thirdly, the Website has gone through a period of improvement. Back issues of the RECORDER to 1998 are online. So are all the back issues of the Journal. If you are wondering if you paid your annual membership fee, you can query yourself on the Website's member search engine. The search output is limited to five 'hits' or less. This enables a member to check their membership details and update them by themselves.

The Website's Member Search functionality deserves a detailed explanation. To ensure security of the membership information, the following system is in place. To change your personal information (e.g. place of work, phone number, email address, etc.), you will need your membership number. This number is on the CSEG Membership card that is mailed to you when your membership fees are received. You can then enter your updated changes directly into the online database yourself. However, for security purposes, this is not the official database. Updates to the online database trigger an email to the CSEG office with the changes. These changes are then entered into the official membership database at the CSEG office. Every month, an update occurs where the official database is uploaded and overwrites the online database. Thus it is possible for a member to properly update his personal information only to see a spelling mistake (or some other 'fat finger fault') show up a month or so later.

CHRIS IRVINE
Director of Communications 2002/2003

Managing Director

This past year has seen a significant growth for CSEG, with the development and implementation of our Continuing Education's "Doodle Train" week, and the continued success of our annual convention. Both events proved not only to be a huge technical success, but also provided the CSEG with a much-needed financial boost. This success will afford the CSEG to do some long overdue upgrades to the office computer system, and help us provide continuity in the presentation of luncheon talks, by allowing us to purchase two top end LCD projectors. It will also enable our Web committee to further enhance the CSEG site. Bottom line, the 1900 individual and 80 Corporate members of the CSEG will be sole beneficiary of the success of these two programs.

Success, as we experienced in 2002, also enables the CSEG Executive and administration to establish a Long Range Plan that now has the financial teeth to sink into the many projects that await the CSEG and its membership. However, strong financial management, fiscal prudence and good old "lady luck" will need to continue if we are to realize the initiatives laid out in the LRP. The CSEG Executive has aligned themselves with an independent fund consultant in Rhind and Associates. This, along with our financial accounting being professionally administered by Association Plus, puts the CSEG on the right path to ensure our future financial health. However it is also important to note that as a non-profit society, the CSEG is very vulnerable to the economic climate that forever haunts our industry. So when the CSEG does experience financial growth, like we did in 2002, it has to be properly managed to defend against the years that are not as flush.

The CSEG was also able to expand its permanent staff, starting in January 2003. Joining our office as Administrative Marketing and Services Coordinator is Sheryl Meggeson. Sheryl brings a wealth of experience in this area and will be certain to make an immediate impact on our society. At the same time I would like to thank Debbie Bradley, who served the CSEG and membership in our office since 2001. Debbie's service to the CSEG was invaluable, and very much appreciated by the membership.

In closing, I look forward to the challenges that lie ahead for the CSEG in 2003. From the Distinguished Instructor Short Course in April, to the joint convention with the CSPG in June, and to the Second Annual Doodle Train in November. We will continue to keep the membership well informed, with a top end publication in the RECORDER, and an improved website. All indicators bode well for the future of the society.

JIM RACETTE
CSEG Managing Director

GODFREY & GODFREY
CHARTERED ACCOUNTANTS
 Eldon C. Godfrey, FCA
 Matthew E. Godfrey, CA

SUITE 200, CAMPANA PLACE
 609 - 14th STREET NW
 CALGARY, ALBERTA, T2N 2A1
 TEL: (403) 270-2662 FAX: 270-3094
 EMAIL: info@godfrey-godfrey.ca

Auditors' Report

To the Members
 Canadian Society Of Exploration Geophysicists

We have audited the statement of financial position of the Canadian Society Of Exploration Geophysicists as at December 31, 2002 and the statements of operations and changes in fund balances and cash flow for the year then ended. These financial statements are the responsibility of the Society's management. Our responsibility is to express an opinion on these financial statements based on our audit.

Except as explained in the following paragraph, we conducted our audit in accordance with Canadian generally accepted auditing standards. Those standards require that we plan and perform an audit to obtain reasonable assurance whether the financial statements are free of material misstatement. An audit includes examining, on a test basis, evidence supporting the amounts and disclosures in the financial statements. An audit also includes assessing the accounting principles used and significant estimates made by management, as well as evaluating the overall financial statement presentation.

In common with many not-for-profit organizations, the Society derives revenue from membership dues and sponsorships, the completeness of which is not susceptible of satisfactory audit verification. Accordingly, our verification of membership dues and sponsorships was limited to the amounts recorded in the records of the Society and we were not able to determine whether any adjustments might be necessary to revenues, deficiency of revenue over expenditures, current assets and net assets.

In our opinion, except for the effect of adjustments, if any, which we might have determined to be necessary had we been able to satisfy ourselves concerning the completeness of the revenues referred to in the preceding paragraph, these financial statements present fairly, in all material respects, the financial position of the Society as at December 31, 2002 and the results of its operations and cash flow for the year then ended in accordance with Canadian generally accepted accounting principles.

Calgary, Alberta
 February 12, 2003



GODFREY & GODFREY
 CHARTERED ACCOUNTANTS

GODFREY & GODFREY
CHARTERED ACCOUNTANTS
Eldon C. Godfrey, FCA
Matthew E. Godfrey, CA

SUITE 200, CAMPANA PLACE
609 - 14th STREET NW
CALGARY, ALBERTA, T2N 2A1
TEL: (403) 270-2662 FAX: 270-3094
EMAIL: info@godfrey-godfrey.ca

**Canadian Society Of Exploration
Geophysicists
Financial Statements
December 31, 2002**

Canadian Society Of Exploration Geophysicists
Statement of Financial Position
December 31, 2002

	2002			2001			
	Operating Fund	Project Fund	Convention Fund	Operating Fund	Project Fund	Convention Fund	Total
Assets							
Current assets							
Cash	\$ 397,305	\$ 10,000	\$ 55,000	\$ 218,838	\$ -	\$ 45,882	\$ 264,720
Accounts and advances receivable	48,432	-	20,000	71,388	-	29,118	100,506
Prepaid expenses	<u>5,231</u>	-	-	<u>4,213</u>	-	-	<u>4,213</u>
	450,968	10,000	75,000	294,439	-	75,000	369,439
Capital assets (note 3)	<u>16,011</u>	-	-	<u>20,331</u>	-	-	<u>20,331</u>
	<u>\$ 466,979</u>	<u>\$ 10,000</u>	<u>\$ 75,000</u>	<u>\$ 314,770</u>	<u>\$ -</u>	<u>\$ 75,000</u>	<u>\$ 389,770</u>
Liabilities							
Current liabilities							
Accounts payable and accrued liabilities	\$ 44,219	\$ -	\$ -	\$ 44,134	\$ -	\$ -	\$ 44,134
Fund Balances							
Invested in capital assets	16,011	-	-	20,331	-	-	20,331
Internally restricted (note 4)	260,000	10,000	75,000	150,000	-	75,000	225,000
Unrestricted	<u>146,749</u>	-	-	<u>100,305</u>	-	-	<u>100,305</u>
	<u>422,760</u>	<u>10,000</u>	<u>75,000</u>	<u>270,636</u>	<u>-</u>	<u>75,000</u>	<u>345,636</u>
	<u>\$ 466,979</u>	<u>\$ 10,000</u>	<u>\$ 75,000</u>	<u>\$ 314,770</u>	<u>\$ -</u>	<u>\$ 75,000</u>	<u>\$ 389,770</u>

Approved by the Board,



Canadian Society Of Exploration Geophysicists
Statement of Operations and Changes in Fund Balances
Year Ended December 31, 2002

	2002			2001			
	Operating Fund (Schedule 1)	Project Fund (Schedule 2)	Convention Fund	Operating Fund (Schedule 1)	Project Fund (Schedule 2)	Convention Fund	Total
Revenue	\$ 414,681	\$ 224,807	\$ 617,038	\$ 411,334	\$ 17,156	\$ 527,322	\$ 955,812
Expenses							
Program costs	323,991	165,082	404,190	345,983	42,426	441,767	830,176
Administrative	201,137	-	-	237,309	-	-	237,309
	<u>525,128</u>	<u>165,082</u>	<u>404,190</u>	<u>583,292</u>	<u>42,426</u>	<u>441,767</u>	<u>1,067,485</u>
Excess (deficiency) of revenue over expenses	(110,447)	59,725	212,846	(171,958)	(25,270)	85,555	(111,673)
Fund balances, beginning of year	270,636	-	75,000	297,036	-	160,273	457,309
Interfund transfers (note 4)	212,846	-	(212,846)	170,828	-	(170,828)	-
Interfund transfers (note 4)	<u>49,725</u>	<u>(49,725)</u>	-	<u>(25,270)</u>	<u>25,270</u>	-	-
Fund balances, end of year	\$ 422,760	\$ 10,000	\$ 75,000	\$ 270,836	\$ -	\$ 75,000	\$ 345,836

Canadian Society Of Exploration Geophysicists
Schedule of Operating Fund Revenue and Expenses
Year Ended December 31, 2002

Schedule 1

	2002	2001
Revenue		
Memberships - individual	\$ 85,770	\$ 86,240
Memberships - corporate	18,834	20,750
Recorder and Annual Report	169,336	173,666
Luncheons	106,159	110,297
Educational services	25,865	7,682
Interest and other	<u>8,717</u>	<u>12,699</u>
Total revenue	<u>414,681</u>	<u>411,334</u>
Expenses		
Program costs		
Recorder and Annual Report	200,101	232,177
Luncheons	97,519	89,107
Educational services	17,583	17,192
Annual meeting, elections and awards	<u>8,788</u>	<u>7,507</u>
	<u>323,991</u>	<u>345,983</u>
Administrative		
Salaries and benefits	81,446	119,517
Office occupancy	36,825	29,218
Office expenses	26,720	26,386
Professional fees	18,647	29,774
Committee and liason costs	3,197	6,538
Executive projects and costs	14,096	7,284
Insurance	1,848	1,777
Memberships	1,664	1,176
Bad debts	11,324	10,735
Donations	1,050	-
Amortization	<u>4,320</u>	<u>4,904</u>
	<u>201,137</u>	<u>237,309</u>
Total expenses	<u>525,128</u>	<u>583,292</u>
Excess of expenses over revenue	<u>\$(110,447)</u>	<u>\$(171,958)</u>

Canadian Society Of Exploration Geophysicists
Schedule of Project Fund Revenue and Expenses
Year Ended December 31, 2002

Schedule 2

	2002	2001
Revenue		
Doodle Train	\$ 204,246	\$ -
Master Licensing Agreement	17,655	10,848
Publication sales	<u>2,906</u>	<u>6,308</u>
Total revenue	<u>224,807</u>	<u>17,156</u>
Expenses		
Doodle Train	130,164	-
Web site development	12,930	537
Geoscience Professional Development Centre	10,000	-
Canadian Geoscience Council	5,988	5,165
Doodlebug sponsorship	3,000	-
Distinguished Lecturer and Honorary Address	3,000	-
Master Licensing Agreement	-	18,400
Cost of publication sales	-	17,338
Chief Geophysicists Forum	-	748
Photo directory	<u>-</u>	<u>238</u>
Total expenses	<u>165,082</u>	<u>42,426</u>
Excess (deficiency) of revenue over expenses	<u>\$ 59,725</u>	<u>\$ (25,270)</u>

Canadian Society Of Exploration Geophysicists
Statement of Cash Flow
Year Ended December 31, 2002

	2002	2001
Operating activities		
Excess of expenses over revenue	\$ 162,124	\$(111,673)
Add (deduct) items not affecting cash		
Amortization	<u>4,320</u>	<u>4,904</u>
	<u>166,444</u>	<u>(106,769)</u>
Changes in non-cash working capital		
Decrease (increase) in accounts receivable	32,074	117,634
Decrease in prepaid expenses	(1,018)	15,964
Increase (decrease) in accounts payable and accrued liabilities	<u>85</u>	<u>(38,474)</u>
	<u>31,141</u>	<u>95,124</u>
	<u>197,585</u>	<u>(11,645)</u>
Investing activities		
Acquisition of capital assets	<u>-</u>	<u>(4,291)</u>
Cash inflow (outflow)	197,585	(15,936)
Cash and term deposits, beginning of year	<u>264,720</u>	<u>280,656</u>
Cash and term deposits, end of year	<u>\$ 462,305</u>	<u>\$ 264,720</u>
Cash and term deposits comprise:		
Cash	\$ 462,305	\$ 29,720
Term deposits	<u>-</u>	<u>235,000</u>
	<u>\$ 462,305</u>	<u>\$ 264,720</u>

Canadian Society Of Exploration Geophysicists

Notes to Financial Statements

December 31, 2002

1. Nature and object of the Society

The Canadian Society of Exploration Geophysicists was established as a Society under The Societies Act of Alberta on December 20, 1949, as a not-for-profit organization.

The object of the society is to promote the science of geophysics, especially as it applies to exploration, and to promote fellowship and cooperation among the persons interested in geophysical problems.

2. Accounting policies

(a) Fund accounting

In 2001, the Society changed its financial statement disclosure to reflect the segregation of funds related to projects and conventions.

Revenues and expenses related to core Society programs and administrative activities are reported in the Operating Fund.

Revenues and expenses related to special projects undertaken or supported by the Society from time to time are reported in the Project Fund.

Revenues and expenses related to the Society's annual convention are reported in the Convention Fund.

(b) Revenue recognition

The Society follows the deferral method of accounting for contributions. Restricted contributions are recognized as revenue of the appropriate fund in the year in which the related expenses are incurred. Unrestricted contributions are recognized as revenue of the appropriate fund when received or receivable if the amount can be reasonably estimated and collection is reasonably assured.

Project revenues and expenses are recognized in the Project Fund during the period when the revenue is received and expenses are incurred.

Convention revenues and expenses are recognized in the Convention Fund during the period when the convention is held.

(c) Capital assets

Capital assets are recorded in the Operating Fund at cost. Amortization is provided on a straight-line basis over eight years, being the estimated useful life of the assets.

Canadian Society Of Exploration Geophysicists
Notes to Financial Statements
December 31, 2002

(d) Contributed services

Because of the difficulty of determining their fair value, contributed services are not recognized in these financial statements.

(e) Social committees

Various social committees within the society have monies available to them in order to administer the specific activities for which the committees were established.

The financial activities of these committees have not been reported upon in these financial statements.

(f) Income taxes

The Society is a not-for-profit organization and is exempt from income taxes pursuant to Section 149 of the Income Tax Act.

3. Capital assets

	Cost	Accumulated Amortization	Net Book Value	
			2002	2001
Office furniture and equipment	\$ <u>34,710</u>	\$ <u>18,699</u>	\$ <u>16,011</u>	\$ <u>20,331</u>

Canadian Society Of Exploration Geophysicists
Notes to Financial Statements
December 31, 2002

4. Internally restricted fund balances and interfund transfers

The Society's Executive Committee has internally restricted resources amounting to \$345,000 (2001 - \$225,000). These internally restricted amounts are not available for other purposes without approval of the Executive Committee.

The internally restricted funds have been allocated as follows:

	2002	2001
Operating fund		
Operating reserve	\$ 225,000	\$ 150,000
Capital asset purchase and replacement	<u>35,000</u>	<u>-</u>
	<u>260,000</u>	<u>150,000</u>
Project fund		
Website development	<u>10,000</u>	<u>-</u>
Convention fund	<u>75,000</u>	<u>75,000</u>
	<u>\$ 345,000</u>	<u>\$ 225,000</u>

The Society undertakes and/or supports special projects from time to time. Funds are transferred from the Operating Fund to the Project Fund upon approval of projects by the Project Review Committee and the Executive Committee. Excess funds are transferred back to the Operating Fund upon completion of individual projects. During the year, \$49,725 (net) was transferred from the Project Fund to the Operating Fund (2001 - \$25,720 (net) transferred from the Operating Fund to the Project Fund).

Convention funds in excess of the \$75,000 internal restriction will be transferred to the Operating Fund upon receipt. During the year, \$212,846 (2001 - \$170,828) was transferred from the Convention Fund to the Operating Fund.

5. Lease commitment

The Society is committed under a lease on premises for future rental payments as follows:

2003	\$ 35,088
2004	35,088
2005	35,088
2006	<u>26,316</u>
	<u>\$ 131,580</u>

Canadian Society Of Exploration Geophysicists
Notes to Financial Statements
December 31, 2002

6. Scholarship Trust Fund

The Society exercises significant influence over the Canadian Society of Exploration Geophysicists Scholarship Trust Fund ("STF") by virtue of its participation in policy-making processes. The STF was established to provide scholarships to students enrolled in a post-secondary educational institution leading to a career in geophysical sciences. The STF is a registered charity and reports as required under the Income Tax Act.

	2002	2001
Balance, beginning of year	\$ 193,045	\$ 197,104
Contributions - Industry and private	24,250	35,700
Interest	<u>2,000</u>	<u>2,341</u>
	<u>219,295</u>	<u>235,145</u>
Scholarships awarded	34,000	42,000
Bank charges	<u>39</u>	<u>100</u>
	<u>34,039</u>	<u>42,100</u>
Balance, end of year	<u>\$ 185,256</u>	<u>\$ 193,045</u>
Endowment funds		
Chris Elms Memorial Fund	\$ 20,000	\$ 20,000
Ted Popilchak Memorial Fund	<u>20,000</u>	<u>20,000</u>
	40,000	40,000
Unrestricted funds	<u>145,256</u>	<u>153,045</u>
	<u>\$ 185,256</u>	<u>\$ 193,045</u>

7. Comparative figures

Comparative figures have been revised to conform with the current year's presentation.

C O M M I T T E E R E P O R T S

Chief Geophysicists' Forum

The Chief Geophysicists' Forum (CGF) met each quarter in 2002 with an average attendance of 25 (Chief Geophysicists and invited guests). At each meeting the agenda included new and information items and on-going discussion items.

Just as last year, the on-going concerns were about licensed seismic data, particularly about transfer fees and use of licensed data in datarooms.

The CSEG Master Licence Agreement (MLA) has not been unreveredly embraced within the Chief Geophysicists community; some clauses and terms are considered difficult. A proposal was brought forward to remove clause 11.4 from the MLA. This clause deals specifically with transfer fees of licensed data. In September the CGF recommended to the MLA review committee that this clause be removed in its entirety.

Another issue of on-going concern is that of a code of practice for datarooms. The CGF attempted to use the rationale of the MLA to build such a code, but found it was not totally appropriate. A sub-group of the CGF met in October to focus on this issue. It was decided to restrict the discussions solely to oil-company licensed data (that is NOT data owned by a broker company). As both licensors and licensees were present, some progress was made towards agreeing on a code of practice. Much more work is needed, but a framework has been proposed and approved by the CGF and work will continue with a sub-group of volunteers in 2003.

In September the Seismic Operating and Data Ownership Agreement (SODOA) was again reviewed for the CGF, but unfortunately little progress has been made in 2002 and the document is still in legal review. However, the current draft was distributed to the CGF.

New items brought to the attention of the CGF this year included the Student Industry Field Trip. This is sponsored by the CSPG and takes 30 of the top Geology students from across the country and provides them a 10-day immersion in the oil industry. It was suggested in March that the SIFT be expanded or modified to include Geophysicists.

In June Bill Goodway, Vice-President of the CSEG, made a plea for pledges from oil companies and individuals to help support the chair in geophysics at the University of Calgary. Pledge forms were distributed at the meeting.

Then at the September forum Rudolf Meyer described the University of Calgary's Geoscience Professional Development Centre (GPDC). He asked the CGF to help him by both suggesting courses, and considering releasing seismic data sets for training exercises.

In June, September and December the organizers of the first CSEG "Doodle Training" week reported on the event, its content and its success.

Graham Millington
Chair, Chief Geophysicists' Forum 2002/2003

University of Calgary Chair in Exploration Geophysics Committee

During 2002, Larry Lines completed his five-year appointment to the Chair. Before discussions could take place about a renewal, Larry was asked to run for the position of Department Head of Geology and Geophysics. He was accepted to the position and started in September 2002.

Even though the Chair is not fully funded, it was felt that the position should be filled as soon as possible. Because of funding cutbacks, it was agreed that only U of C candidates would be interviewed (hiring a candidate from outside U of C would have forced the layoff of one of the current staff).

Two strong applications were received and interviews held. Dr. Don Lawton was offered and accepted the five-year appointment as the fourth holder of the University of Calgary Chair in Exploration Geophysics.

The Chair corpus is under-funded by about \$1.4 million (a fully endowed chair requires about \$3 million given current interest rates). We are currently seeking five-year pledge donations to help cover about \$40,000 per year of Chair expenses. Any excess donations will be used to top up the corpus.

Dave Cooper has resigned from the committee and a replacement will be recruited during 2003.

Neil Rutherford
Chair, U of C Chair in Exploration Geophysics Committee
2002/2003

Continuing Education Committee

Chairman: Bill Nickerson

Committee members: Sue Carr, Stuart Mitchell, Sandy Chen, Sandor Bezdan, Bob Parker, Rod Garland, Ron Hinds, Lisa Michetti, Kristy Howe, Larry Lines, Barbara Young

Stepping down from the committee this year were:

Jim Thoms and Bob Mummery

Barb Young stays on in an advisory role, but is now primarily associated with the Outreach Committee

Graham Millington and Walt Posadowski joined for the Doodle Train, but are not regular members of the CE committee.

Summary

The CE Committee embarked on one major project in 2002: Continuing Education week, the "Doodle Train", was held during the week of Nov. 4-8, 2003. Twenty courses were attended by 346 students. A similar number attended the Keynote luncheon by Sven Treitel. Approximately 100 attended a meet-the-teacher social event held mid-week. The event turned a profit in excess of \$50,000 and the CE committee is planning to offer the Doodle Train again this year for the week of Nov 3-7, 2003.

Background: On June 11, 2002, the CE committee brought forward a proposal to the executive to hold a Continuing Education week in November. The concept was to provide an intensive week of continuing education opportunities aimed at the demographic spectrum of CSEG members. Approval was granted and bridge funding of \$10,000.00 granted.

Objectives:

1. To provide training opportunities to our members not otherwise available on the public market in Calgary.
2. To provide training opportunities for members across the CSEG demographic including cross-discipline training. (This complements rather than competes with our GPDC sponsorship.)
3. To turn a modest profit in the 4th quarter.

Look-back: The project was managed like a convention, with individual committee members responsible for venues, finance, sponsorship, advertising, registration etc. A brief summary of each area follows.

Advertising: Ads were placed in the September and October RECORDER issues, the DOB, the CSEG and other industry websites. Table drops and announcements were made at fall luncheons of the CSEG, CSPG and CAGC. A bulk mailing of registration material was made to the CSEG membership and 2 bulk e-mail reminders were sent out to the membership. 191 surveys returned by class participants cited the following results in response to the question "How did you learn about the Doodle Train?"

* E-mail	46%
* RECORDER	28%
* Luncheon	10%
* Word of mouth	15%

Venues: Almost all venues were donated, mostly corporate classrooms and boardrooms donated by 20 companies. Some of the smaller

rooms proved to be barely adequate in terms of space. Two were rented. Two classes required computer labs, one was donated, the other rented from GPDC. Corporate donation of venues reduced both our costs and arrangements burden since all donated venues came with AV equipment and many hosts picked up the tab for coffee and snacks.

Registration: Registration was handled by the CSEG office. Extensive clerical support was required for about a month when the registrations were coming in. Total registration was 330 paying registrants and a total of 346 including the volunteers. Fees were set at \$330 per course day with a 10% discount if registered before the early-bird deadline. Approximately 60% of registrations were received before the early-bird deadline of October 4th. The registration committee, consisting of Sue Carr and Walt Posadowski, also handled the course materials and instructor arrangements, including immigration for the 6 instructors coming in from the US.

Sponsorship: A sponsorship goal of \$50,000 or 30% of our estimated costs was set. The idea was that cash sponsorship would lessen our dependence on registration fees, covering as much of our fixed costs as possible, so that no courses would have to be cancelled. Identifiable sponsorship opportunities such as the Luncheon, Social, Binders and Notepads were offered. It soon became obvious that our target was too aggressive. In the end, after intense solicitation, \$19,000 was raised and several of our key sponsorship items like the Social and the notepads remained unsponsored. Sponsors were recognized in advertising, on the website, at the classroom and on the course binders. Four instructors declined or donated their honoraria, amounting to another \$8400 in effective sponsorship.

Course Materials/Instruction: All course materials were reproduced by the organizers. Binders were donated by the photocopy contractor. Course materials ranged widely in price from about \$10 to \$150 per person, but budgeting for an average cost of \$50 per person worked out okay. Instructors were paid a flat rate of \$US1500 /day plus expenses. This is copied from the SEG policy.

Luncheon: Approximately 350 people attended the keynote luncheon given by Dr. Sven Treitel. Tickets cost \$40. A luncheon sponsor, Anadarko, helped defray travel costs. All other luncheon arrangements were made by the regular luncheon organizers, Penny Colton and Bev Archdekin. Proceeds from the sale of luncheon tickets appear as luncheon rather than Doodle Train revenue.

Learnings:

- * Adopt more realistic sponsorship goals.
- * Inspect venues and book them earlier to get best rooms.
- * Serve better food for increased luncheon ticket price.
- * Maximize use of CSEG office staff.
- * Have a firm registration cut-off.
- * Pay US instructors in US dollars.

Plans: The CE committee is planning to hold a second annual Doodle Train in the week of Nov. 3-7, 2003. We are presently compiling a course list and will be polling the members in February on their CE requirements

Bill Nickerson

Chairman, Continuing Education Committee 2002/2003

2002 CSEG National Convention Committee

The 2002 CSEG National Convention was held in Calgary from May 6 to 9. Over 2200 registered delegates, including over 2000 from Canada and almost 150 from the USA, attended the Convention. We had delegates from as far away as Argentina, Columbia, China and Nigeria attending.

The Convention committee tried to build on positive feedback from past conventions to encourage social, business marketing and technical interaction among the attendees. In spite of a late spring snowstorm, the Icebreaker social gathering was well attended and kicked off the Convention. Over 110 oral papers and poster presentations, including a special session of invited papers, provided the formal technical portion of the Convention. Finally, the exhibit floor showcased the latest in tools and services available to the geophysical industry in Canada.

The committee tried to provide value for the money for all attendees. By keeping costs down (e.g. using the worldwide web for abstract submissions, late announcements, and other communications, saving \$3,000 by eliminating the committee photograph, putting the abstracts on a CD as opposed to hardcopy), we tried to mitigate the chance of a small profit for the CSEG. However, late registrations and a full exhibit floor resulted in a larger than expected profit of over \$200,000. This profit will help continue to run the CSEG.

The Committee members showed exemplary stewardship in ensuring that the 2002 Convention built on the successes of past Conventions, and provided a safe, upbeat, educational and entertaining event for all attendees; their work should be commended. If you see anyone of these people, stop and buy them a coffee, or at least give them a big hug!

Name	Committee Responsibility
Oliver Kuhn	Technical
Kevin Marsh	Registration
Corey Hooge	Internet Liaison
Peter McCann	Arrangements
Lisa Michetti	Printing and Publicity
John Townsley	Exhibits
Stuart Mitchell	Continuing Education
Ian Watson	Treasurer
Dave Westlund	Co Chairman
Cherene Crawford	Sponsorship
Rob Vestrum	Icebreaker
Jim Stenhouse	Past Chairman
Jim Racette	CSEG
Debbie Bradley	CSEG

Respectfully submitted,
Andy St. Onge
 Chair, Convention Committee 2002

CSEG - APEGGA Advisory Committee

The past year saw further cooperation and liaison between our technical society and APEGGA, the regulator of the Engineering, Geologic and Geophysical Professions. Highlights of this year's activities by the CSEG - APEGGA Advisory Committee included:

- APEGGA funding and regulatory support of the CSEG MLA effort
- APEGGA funding of CSPG - CSEG Lecture
- APEGGA exhibiting at CSEG convention
- "Team CSEG" (CSEG Executive representatives) attending the APEGGA Golf Tournament.
- Meeting with President and Executive Director of APEGGA as part of semi-annual Geoscience Liaison.

Significant, new developments in the continued relationship between the CSEG and APEGGA included:

- Announcement by APEGGA that a new position has been created: Director of Geosciences with responsibility to afford more input and involvement by Geosciences and to more appropriately regulate the Geoscience Professions.
- Search is underway for a quantified Professional geoscientist for the position.
- Ongoing liaison through Geoscience Liaison meetings.

The Committee invites any CSEG member that has concerns about the operation of APEGGA to address these to the CSEG APEGGA Advisory Committee. We will endeavor to refer any matters appropriately.

Submitted on behalf of
 Committee Members:

Bob Comer
 John Boyd
 Elaine Honsberger
 Elvis Floreani
 Rob Huck
 Perry Kotkas

Kenneth I. (Ken) Mitchell
 Chair, CSEG - APEGGA Advisory Committee 2002/2003

Doodlebug Committee

I wish to thank the Sponsors of the Fiftieth Doodlebug for their generosity, commitment and overwhelming support. The huge success of this year's Doodlebug was made possible because of your generous support. Thank you. I would also like to thank all the sponsors throughout the years - the incredible fifty-year run of the Doodlebug could never have been achieved without you, and we look forward to working with you for the next fifty years!

Thank you Chairman and Platinum level sponsors.

Last year the Doodlebug celebrated its fiftieth birthday and what a great party it was! Friends from all over North America made the annual pilgrimage on September 5-7th to get reacquainted, enjoy themselves and play golf at the beautiful Jasper Park Lodge. In attendance were 19 past Chairmen and their wives including the 1954 Chairman Ted Rozsa, his lovely wife Lola, their daughter Ruth Ann and representing the very first Doodlebug held in 1953, Greg Longphee. Greg and his wife attended on behalf of his late father George Longphee, a past C.S.E.G. President, Doodlebug founder and long time supporter who unfortunately passed away earlier last year. Greg was there to pass on his father's love and respect for the Doodlebug, and in a warm and uplifting speech on Saturday evening Greg paid tribute to his father and his role as a founder of our golf tournament.

On hand were over 320 people, including spouses, with 171 entered in the main tournament, 65 couples in the mixed tournament, and 88 participants in the guest tournament. In fact, attendance was so terrific this year we needed two shotgun starts each day to accommodate everyone. From all accounts, those who attended had a great time. Here are some of the highlights.

On Wednesday evening the committee made final tournament preparations with a kickoff barbeque in the Chairman's Suite. Chefs Greg Groten, Chris Barton and Jack Bull did an admirable job at the grill. Everyone was buzzing with excitement and adrenalin as the 50th Doodlebug was just around the corner. Nerves must have been frayed from all the effort and preparation building up to the 50th, as the amount of red wine consumed by the committee was frightening!

On Thursday, 65 couples teed off on a cool and refreshing morning, and the Doodlebug was underway! This mixed couples tournament and BBQ was one of the best, and most well attended events at the Doodlebug. Following Chairman Podivinsky's lead, it was played with a shotgun start. This format blends perfectly with the strong social aspect of the Doodlebug, as it allows everyone - attendees and their spouses - the opportunity to socialize, joke around, golf and all have a great meal together at the end of the round. Everyone joined in the fun of the many prizes and draws that were well organized this year by Derek Boeckx of the Golf Committee.

On Friday morning the main tournament began with a touching opening ceremony hosted by the Vice Chairman Bruce Gawalko. Bruce and the 120 or so golfers assembled on the first tee box, ready for their shotgun start, while the rest of the committee congregated in the Milligan Manor just off of the first fairway. The weather was perfect - a little foggy, slightly cool, with a threat of rain - just like in Scotland! Then on queue, the haunting sounds of the pipes were heard, as Kevin McCarthur, a renowned bagpiper and Doodlebug friend, led the committee out of the mist to the first tee box to stirring renditions of

"Scotland the Brave" and "The Barren Rocks of Aden". Bruce welcomed everyone to the 50th and introduced our guests of honour, who each hit a ceremonial tee ball.

First up was Denny O'Brien (a past Chairman of the Doodlebug), followed by Lola Rozsa, George Kostachuk, and finally me, Steve Fuller. Denny represented all of our out-of-town guests, Lola has been associated with the Doodlebug from day one, and George currently has played in more consecutive Doodlebugs than any active player. Denny ripped one down the middle, then Lola, who was recovering from a broken hip, hit a beautiful ball down the middle; George made it three for three. The pressure was too great and I pushed one straight into the bush! It was a great way to kick off the tournament, and was one of the defining moments of this special anniversary.

The guest tournament was held at the Hinton Golf Club and was hosted by Linda Towler and Barb Shortreid. Attendance set a record with 86 women and 2 men participating in a Texas Scramble format. Two Brewster buses were chartered and everyone enjoyed muffins, fruit, coffee and Baileys on route to a 9 A.M. shotgun start. The event was a fantastic success with everyone receiving some great prizes while enjoying a fabulous catered lunch. Linda received a standing ovation from all of the participants for her outstanding contribution. At the end of an excellent day, the men escaped from the buses with their virtue intact.

Friday evening brought the winners and losers of the day together to share their stories, enjoy some fabulous food and pay tribute to the past Chairmen in attendance in the Beauvert Dinning Room. Oliver Kuhn, our 50th special events coordinator, had put together some great material describing each year of the Doodlebug in an anecdotal and humorous manner. See our website (www.doodlebug.ca) for this and other interesting Doodlebug material. Oliver also paid special tribute to George Longphee, our founding Chairman, and introduced the new Longphee Trophy, a cherished bronze sculpture from George's estate. Past Chairman Bill Moonie provided some great entertainment and did an excellent job introducing the Past Chairmen in attendance, who all made their way to the stage for a champagne toast to the Doodlebug, its 50 years of great memories and its continued success in the future. The commemorative DVD the committee had made in honour of the 50th Doodlebug was also featured.

Saturday's golf was made interesting by a 2 1/2-hour frost delay. Luckily the golf committee had the foresight to start all of the players competing for the coveted Doodlebug ceramics in the morning, so all matches were completed. And there were some great ones. The battle for the Doodlebug ceramic went down to the last green with Darryl Robbins just edging out Steve Stretch. Congratulations Mr. Doodlebug - Darryl Robbins! The frost delay, however, put time pressure on those competing in the Chuckwagon event, which started at 4:00 pm. Cocktails traditionally start at 6:30pm and dinner is served at 8:00 Saturday evening. Our theme for the night was Hawaii Five-O, so players needed the time to change after the round and make it to dinner. Everyone rallied together and the Chuckwagon event finished in a record 4 1/2 hours at 8:15 that night. Luckily the entertainment committee had made a wise decision and Saturday Night's dinner was a Hawaiian Buffet. Players and spouses from the morning round began eating dinner first, and couples affected by the late Chuckwagon event joined them when they could. Saturday night is the Awards ceremony,

Doodlebug Committee continued

with all winners receiving their ceramics and the winning Chuckwagon team - now awarded the new Longphee Trophy - is introduced. See www.Doodlebug.ca for the complete list of winners. The buffet dinner allowed the Awards presentations to start right on time.

The highlight of the evening was a tribute to Mr. and Mrs. Rozsa. Ted and Lola have been Mr. and Mrs. Doodlebug for the past 50 years, having attended a record 43 straight Doodlebugs and never missing a year of sponsorship. They have been fantastic promoters and patrons and will forever remain the heart and the soul of the Doodlebug. Lola gave a poetic and heartfelt speech about their years at the Doodlebug that ended in a well-deserved standing ovation, and left tears in many eyes. See www.Doodlebug.ca for the actual text.

Another really special moment occurred when Larry Romanchuk received the Rozsa Award, joining the select group of people who have attended 25 years of Doodlebug tournaments. The likelihood that this would be the last time the Award was presented by Ted Rozsa in person made the moment all the more poignant.

Saturday night festivities finished on a lively note, with everyone dancing to the great sounds of Shakin' Not Stirred and their tribute to 5 decades of rock and roll.

This year the Doodlebug had its first hole-in-one in over twenty years, when Ian Baker spanked one into the 15th hole, "The Bad Baby". Unfortunately the hole was not long enough to qualify for "hole-in-one insurance", but the committee awarded Ian a great gift certificate for a great shot. Congratulations Ian!

Shannon Niemi was the first woman to win a ceramic in the history of the Doodlebug. Congratulations Shannon!

This year the Doodlebug raised over \$4600.00 for our charity, the Children's Hospital Foundation.

What also made the Doodlebug very special to me was the dedication and sincere effort put forth by every member of this year's committee. We had many unknowns going into this year's tournament, all of which put extra pressure on everyone and every sub-committee. Everyone handled it with hard work, dedication and style. Congratulations on a fantastic job. I feel very proud and fortunate to have been associated with such a great group. Thank you.

I would also like to congratulate Tom Podivinsky on a productive, very successful and highly memorable five years on the committee. At the 50th I was struck by the passion and enthusiasm all of the past Chairmen still have for this tournament. It is this passion that started the tournament, carried it forward through the ups and downs of our business, and helped make our reunion birthday celebration a success. In serving with Tom for these last four years it is obvious that he too has this passion, enthusiasm and conviction. His ideas and suggestions have always been for the betterment of the tournament. "Bet the Pod" may well go down in history as the biggest charity fundraiser the Doodlebug has ever had. He has also set the new standard of hospitality as a Chairman. I know he will continue to play a significant role in the Doodlebug's future. Cheers!

Bruce, I know you will make a great Chairman and host a very successful event. I look forward to helping you do so next year.

Again, thank you to everyone on the committee and all the sponsors. It has been a pleasure. Thanks also to Allan Carter and Sue Kavanagh of the Jasper Park Lodge for their hard work and support.

If anyone would like a copy of our 50th Anniversary DVD please contact me.

Thank you

Steve Fuller
Chairman, 50th Doodlebug Committee

Doodlespiel Committee

The 2002 Doodlespiel was the 30th Annual event and was held in Banff Feb.1 - 3. This year we had a record 76 rinks and 304 curlers. The main event was won by the team of Perry Dyck, Ken Evens, Warren Young, and Pat Brown. This was the foursome's 4th time to win the Doodlespiel. Congratulations!!

This year we introduced a new "holeplug" event, which allowed an additional 12 rinks to participate in the bonspiel. Given the increasing popularity of the event, this was a very positive change undertaken by the committee.

As always, we would like to thank all the sponsors who generously contributed, and made the event spectacular, once again. Without their continued support we wouldn't be able to run such a first class event. I would like to thank the committee of Alan Richards, Chris Barton, Rob Langill, Darrel Jackson and Marty Sommerville, who all spent many hours ensuring the continued success of this event.

Kelly Jamison
Chair, Doodlespiel Committee 2002

Outreach Committee

Outreach is a new committee of the CSEG, established to initiate programs that will:

- Broaden the society's focus and services throughout Canada and with Canadian geophysical expatriates.
- Work with related societies to build awareness of geophysics in the overall community.

After defining its objectives and recruiting a team to work on them, the committee has spent time in establishing relationships, representing the society at student and public events, and developing a plan of attack with specific initiatives. The following have been approved by the Executive for funding:

- Updating and re-printing the brochures on geophysics, developed by Helen Isaac earlier in the year, for use by the committee and the society as a whole.
- Enhancing the CSEG web site with updates related to careers in geophysics, links to other related databases, articles, etc.

- Representing the CSEG at Geoscied IV - a teachers' update at the U. of C. in August.
- Updating the CSEG booth to make it more relevant to today's youth, as well as developing "Geophysics in a Box", a toolkit for those who are speaking about geophysics to interested student bodies.
- Preparing a general interest article on geophysics to broaden understanding of the field in the larger community.

The committee will be working on these initiatives in the coming year.

Present members of the committee are: Barbara Young (chair), Helen Isaac, Cam Fink, Bob Mummery, Susan Thompson, and Anne Halladay. Ayon Day was on the committee prior to returning to pursue advanced university studies.

Barbara Young

Chair, Outreach Committee 2002/2003

RECORDER Committee

The last year has seen us continue our endeavour to enhance and maintain the overall high quality of the RECORDER. Sincere efforts were made to offer good technical content and provide interesting, quality reading material to our members. In the 10 issues published last year, we published 48 technical articles and 8 semi-technical or articles of a general nature. Of the 10, 7 were Special Focus issues, focusing on the following topics:

1. Geology of Regions in and around Canada (Feb. 2002)
2. Memoirs of Successful Geophysicists in Canada (Apr. 2002)
3. Role of Visualization Techniques in 3D Seismic Interpretation (June 2002)
4. Pore Pressure Analysis in Seismic Exploration (Sept. 2002)
5. Natural Gas Hydrates (Oct. 2002)
6. Lessons from the School of Hard Rocks (Nov. 2002)
7. The Latest from the Field: Issues, Development and Technology (Dec. 2002)

In addition to the articles mentioned above, we published 8 interviews on a more-or-less regular basis. Based on the feedback we have received from our members, these were very well received. The following successful geo-scientists were featured in interviews:

Lori Jones	Geoffrey Dorn
John Castagna	Leon Thomsen
John Logel	Bill Kammermayer
Bee Bednar	Jerry Harris

It was a pleasure talking to these prominent people and delving into their successful careers, backgrounds and technical expertise.

Apart from the regular columns like 'Executive Message', 'Tracing the Industry', 'Grapevine', 'Letters to the Editor', 'Technical Terms of the Month' and 'Calendar', new columns like 'Discussion' and 'CAGC Column' were also introduced. We hope the members found them interesting and informative.

In an attempt to bring in all these above-mentioned features into our flagship publication, it was found essential to increase the advertisement tariff by 20 percent, effective September 2002. This has helped offset some part of the publication cost. Hopefully, next year should

see a balanced budget scenario as far as the publication of the RECORDER is concerned, meeting the directive of the CSEG Executive - that the RECORDER aim to operate on a break-even basis.

Articles published in the RECORDER have never been included in the SEG's Digital Cumulative Index. As now a large number of technical articles are published in the RECORDER every year, this matter was taken up with the SEG with the request that the RECORDER articles be included in their database. We are happy to report that SEG has agreed to do so. A list of all the technical articles along with their keywords has been sent to SEG and shortly we should see these articles indexed therein.

Within the RECORDER Committee, in September 2002, Helen Isaac (U of C) and Jason Noble (Edge Technology) joined us as 'Assistant Technical Editors' to help spread around the increased editorial work. Vince Law continues to volunteer his valuable service as Advertising Manager. Amy Wolff (Earth Signal) provides us news of corporate activity in the 'Grapevine' column. Stephan Kearsay looks after the 'Tracing the Industry' column and continues to do a good job. Jim Racette and Debbie Bradley were always available for liaison and help, apart from their organisation of advertising material and related things.

The RECORDER Committee enjoys a good and supporting relationship with Bolder Graphics, our current printer - thanks to Rick Bussi and his crew.

A digital version of the RECORDER is available at www.cseg.ca. Archived back issues (from Dec'98) are also posted on the website.

We will continue in our efforts to maintain and enhance the quality of the RECORDER. This will, however, require support from members of the Society by way of submitting articles or news items and we are sure we can count on that.

Satinder Chopra

Production Editor 2002/2003

Oliver Kuhn

Technical Editor 2002/2003

Scholarship Committee

The CSEG Scholarship Trust Fund awards annual scholarships to geophysics students from universities across Canada. The Fund was established 33 years ago, and since that time the Scholarship Committee has awarded 562 scholarships to deserving students. These scholarships have been funded primarily through generous corporate and individual donations in the cumulative amount of \$717,686.28. Interest generated by the memorial trust funds of Ted Popilchak, Chris Elms and Bob Won accounts for a significant portion of that total sum.

Candidates submit applications by July 15 of each year. The application must be accompanied by official transcripts, 2 letters of reference from professors and must be signed by a school official. Each committee member evaluates the candidates independently, and then the committee convenes in early August to select the winners. The number of available scholarships is determined by the amount of money that the committee has raised from the corporate and individual donors.

The committee typically identifies 15-20 worthy recipients out of approximately 40-60 applicants and ranks them according to their academic standing, financial need, interest in geophysics and extra-curricular activities. The committee strives to distribute the scholarships to the best students across the country. This year the committee awarded 17 scholarships totaling \$34,000.00 to students at 10 Universities. The CSEG scholarships (\$2,000.00) are sufficiently large to significantly offset the cost of the students' tuition. Nineteen of the corporations and individuals approached in 2002 contributed generously to the CSEG Scholarship Trust Fund.

Annual Awards posters are published which list the scholarship recipients and their schools, the donors, and information about the scholarships and how to apply for them. These posters are distributed to university earth science departments and also to the donors, affording the CSEG excellent nation-wide exposure.

The committee comprises 3 people, each of whom serves a three-year tenure. Each volunteer serves as the Junior Trustee in the first year, Senior Trustee in the second year and Chairman in the final year. In 2002, the committee members were:

<i>Junior Trustee,</i>	Liz Hasselgren,	Nexen Petroleum International Ltd.;
<i>Senior Trustee,</i>	Doug Neilson,	Encana Corporation;
<i>Chairman,</i>	Mike Perz,	Geo-X Systems Ltd.

The 2002 Scholarship committee would like to congratulate the following recipients of a 2002 CSEG Scholarship:

Jessie Arthur	University of Alberta
Brooke Berard	University of Calgary
Jamin Cristall	University of British Columbia
Weston Hamlyn	Memorial University of Newfoundland
Chadwick Hewson	University of British Columbia
Circé Malo-Lalonde	Ecole Polytechnique de Montréal
Alastair McClymont	University of British Columbia
Cristina Moldoveanu-Constantinescu	University of Alberta
Charles Murphy	University of Western Ontario
Scott Napier	University of British Columbia
Todd Noble	Queen's University
Aditya Pattanaik	Memorial University of Newfoundland
Alan Surasky	University of Manitoba
Juefu Wang	University of Alberta
Tim Wardell	University of Saskatchewan
Karen Weitemeyer	University of British Columbia
Mikhail Zykov	University of Victoria

The 2002 CSEG Scholarship Committee would like to acknowledge the generous contributions due to the following corporations, individuals and trust funds:

Apoterra Seismic Processing Ltd.
 CGG Canada Services Ltd.
 Core Lab, Reservoir Technologies Division
 Devon Canada Corporation
 Encana Corporation
 GEDCO
 Geo-X Systems Ltd.
 Hampson-Russell Software Services Ltd.
 Input / Output of Canada Inc.
 Kelman Technologies Inc.
 Matrix Geoservices Ltd. Canada Services Ltd.
 Nexen Inc.
 Petro-Canada Oil and Gas
 Sensor Geophysical Ltd.
 Sigma Explorations Inc.
 Suncor Energy Foundation
 Talisman Energy Inc.
 Veritas DGC Inc.
 Larry Lines
 Ted Popilchak Memorial Trust Fund
 Chris Elms Memorial Trust Fund
 Bob Won Memorial Trust Fund

Your 2003 CSEG Scholarship committee will consist of:

<i>Chairman,</i>	Douglas Neilson,	Encana Corporation;
<i>Senior Trustee,</i>	Elizabeth Hasselgren,	Nexen Petroleum International Ltd.;
<i>Junior Trustee,</i>	to be named later.	

Mike Perz
Chair, Scholarship Committee 2002/2003

Seismic Data Task Force

CSEG Recommended Standard Practices

The Seismic Data Task Force is a standing committee within the CSEG. It was derived from a recognized need for improvement and in some cases, the development of, standards that would enhance our existing business practices in the management of seismic data as a corporate asset. The focus is to bring together a group of skilled individuals with varied industry expertise. The challenge is to work together to develop and recommend standard practices that would be adopted by not only the Oil and Gas Industry, but all associated organizations and regulatory bodies.

The Task Force is presently working on three projects from the priority list:

- 1) Industry Line Registry Number
- 2) Reference Value Tables (ongoing with PPDM)
- 3) Data Transfer/Ownership

Future projects on the existing priority list include:
 Classification and Retention schedules
 Standard Forms
 Terminology and Definitions
 FOIPP / PIPEDA Legislation

It is expected that the priorities list will expand and evolve as industry requirements surface.

Update

The Task Force has moved ahead with two of the three projects in 2002, these being 1) Industry Line Registry Number and 3) Data Transfer and Ownership. The documentation for both of these initiatives will be in the

hands of the Executive by the end of January. Shortly thereafter, these documents will be released to the membership for feedback.

The concept of the Industry Line Registry Number (ILRN) has been put across to other Professional Organizations for their buy-in. CAPP, CAGC, PPDM, CAPL and CAPLA have been made aware of the initiative. The Task Force is in the process of answering questions and educating these organizations on the concept. The sharing of knowledge and collaborative efforts of these organizations is essential to the success in the final development of the ILRN.

The Data Transfer and Ownership document has developed extensively this year. This document will clearly define the different data transfer and ownership scenarios as well as a very comprehensive guideline for what documentation and data items (physical and electronic) are required when transferring data in any one of the scenarios. This initiative has well become of great interest to other professional organizations. Janice Madill has been very active this year, in educating the seismic committee within CAPLA.

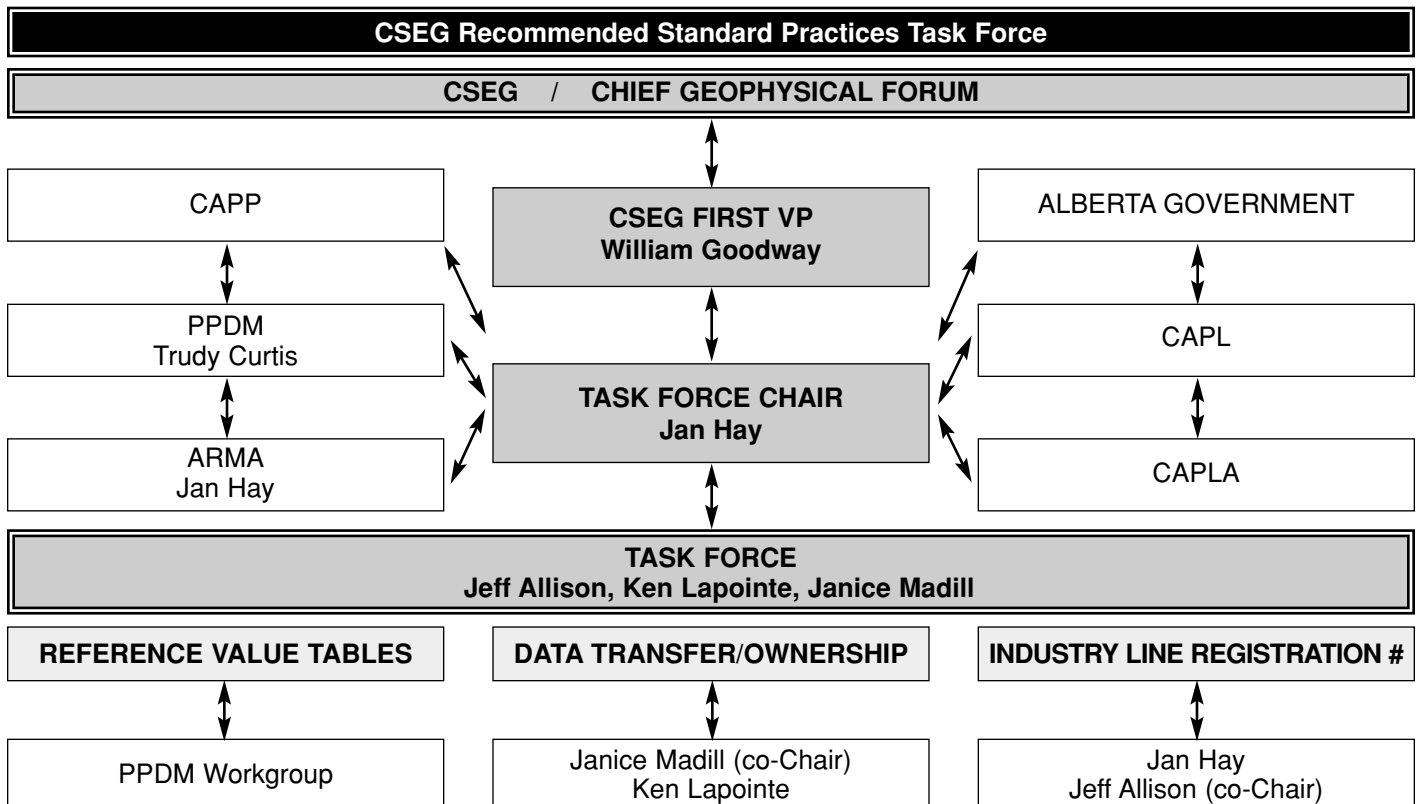
We are all looking forward to completing these two projects. As well, we are anxious to move on to the other projects listed above.

Updates on the other projects will be submitted to the CSEG RECORDER on a regular basis to keep the membership up to date and more importantly to encourage your feedback. Your participation on the Task Force would be very welcome. Please call me at 264-8850 for more information.

I would like to close by extending my sincere thanks to the Task Force Members: Jeff Allison, Janice Madill and Ken LaPointe. It is an honor and a pleasure to work with this group of very devoted people. Please take a moment to review the Task Force Chart and familiarize yourselves with them.

Respectfully Submitted

Jan Hay
 Chair, Seismic Data Task Force 2002/2003



Ski Spree Committee

The 2002 Ski Spree, held at Fairmont Hot Springs Resort in early February, was another milestone event, being the 35th anniversary. Once again a new attendance record was set, with something like 380 adults and children showing up. This record attendance was matched by a record level of sponsorship, greatly appreciated by the organizers and attendees.

Any event can always be improved on, and a questionnaire circulated after the event allowed attendees to give their feedback and suggestions for next year's (2003) event. Most comments were very positive, but there were concerns expressed that the event had become too popular given the size of the banquet facilities at the Lodge. Next year's committee will likely be forced to impose a cap on attendance in order to keep the Ski Spree at a manageable size, and one where attendees and sponsors get full value for their dollars.

Not wanting to break a very successful tradition, the usual schedule of events was held. Jo Ann Wickens, in charge of all social events over the two days, did a simply outstanding job, with lots of help from her enthusiastic team of volunteers (listed below).

Friday evening provided social functions for three age groups - children up to about 12, teenagers, and adults. One new feature this year was a cash bar outside of the kids' "Mini Mixer" party. This allowed adults to soothe their jangled nerves after the always enjoyable drive through mountain passes with vehicles full of little delinquents revved up on sugar and anticipation of the Ski Spree, the highlight of the little angels' social calendars.

The teens enjoyed their night of scavenger hunt, pizza, pop, movie and hot pool. The friendly confines of the Fairmont Hot Springs Resort once again proved to be a great venue for our hormone-charged teens to enjoy some level of independence without their parents worrying too much. The parents meanwhile, fortified by their hallway drinks, were mingling and socializing at the "Mogul Mixer". The highlight of the evening was the Hot Wheels racing, eventually won by Tooney Fink and his Stutz Bearcat going backwards! These Friday night races proved to be so much fun that they are likely to become a tradition.

Saturday saw Mike Jones and his team put on a full day of races for all age groups, and both boarders and skiers. Snow conditions were excellent, and a great time was had by all. Veritas once again hosted their generous on-hill hors d'oeuvres and beverages in the Ski Lodge. Following that, many headed down to the hotel hot pool to soothe their tired muscles and socialize.

Web Site Committee

The CSEG website has been considerably improved and upgraded over the last year, under the enthusiastic and knowledgeable guidance of Satinder Chopra. Most notable are a new overall look to the site, the ability to perform member searches and update membership information, and the ability to view PDFs of past RECORDERS and Journals. These upgrades have been done prudently, and in some cases have saved the society money.

The ongoing focus of the Website Committee is to continue to improve the site, so that it becomes a strong central component of the way the CSEG provides services to its members. There are considerable time and cost efficiencies to be gained through the appropriate use of the website in

The weekend finished on a high note, with the big family sit down Awards Dinner. All the various prizes were given out, including many door prizes provided by sponsors, and with particular care taken to make the younger children all feel recognized and appreciated.

A big event like this really requires four elements to be successful, and the Ski Spree has always been blessed with the best in all four areas. These are a great venue, generous and supportive sponsors, enthusiastic attendees, and a hard working and dedicated group of organizers. I particularly want to thank the sponsors, and the main committee I worked with:

Jo Ann Wickens (Consultant)	Entertainment
Mike Cardell (WesternGeco)	Sponsorship
Kelly Zamiski (Austin Powder)	Registration
Mike Jones (Schlumberger)	Races
Jon Gittins (Veritas)	Treasurer

These individuals put forth a tremendous effort to make the 2002 Ski Spree a success. We all had a lot of fun with it, and all of us are returning to next year's committee in some capacity, with Mike Cardell taking over as Chair. Numerous other volunteers helped out too, and were a big part of this great event. They are listed below.

Entertainment

Marnie Cardell
 Sylvia Kokts-Porietis
 Maureen Loven
 Ken Lengyel
 Susan Bogstie
 Doug Bogstie
 Lavonne Fuller
 Teresa Gawalko
 Jan Gregory
 Nancy Smith-Robinson
 Jim Wickens

Races

Doug Iverson
 Melody Sawchuk
 Matt Laws
 Carol Laws
 Marnie Cardell
 Barrie Jose
 Dennis Daly
 Janelle Cederwall
 Vivian Lalande
 James Bull
 Barb Quirk
 Dale Cederwall
 John Bryant
 Michael Kostachuk
 Patrick Tutty

Oliver Kuhn

Chair, Ski Spree Committee

2002

conjunction with email. A good example of this was the way the Kyoto letter poll was conducted. To have done this via "snail mail" would have been slow, costly and cumbersome; by contrast the electronic poll efficiently and quickly polled the membership. Dissemination of information, including publicizing CSEG events, can be done very effectively and cheaply via the website. We encourage members to use the website as much as they can, provide us with feedback, and we will continue to do our best to make it a vibrant and useful website.

Oliver Kuhn

Website Committee 2002/2003

C S E G A C H I E V E M E N T S

Past Presidents

1950	*J. O. Galloway	1968	*G. E. Longphee	1986	J. D. Boyd
1951	*C. M. Moore, Jr.	1969	*W. Blair	1987	R. L. Comer
1952	*L. I. Brockway, *N. J. Christie	1970	L. R. Baxendale	1988	R. M. Lundberg
1953	*W. R. Ogilvie	1971	R. O. Lindseth	1989	*A. J. Ferworn
1954	*R. J. Copeland	1972	J. K. Morrison	1990	N. E. Rutherford
1955	*R. D. Holland	1973	W. N. Rabey	1991	B. H. Russell
1956	*R. B. Ross	1974	*J. H. Harding	1992	R. J. Brown
1957	*G. J. Blundun	1975	J. R. Pullen	1993	W. E. Davitt
1958	F. A. Hale	1976	W. D. Evans	1994	G. G. Taylor
1959	*H. J. Kidder	1977	R. J. McCaffrey	1995	B. T. Korchinski
1960	*M. B. Dobrin	1978	E. F. Mahaffy	1996	D. Hampson
1961	P. I. Bediz	1979	L. R. Hatlelid	1997	R. Stewart
1962	P. J. Savage	1980	P. D. O'Brien	1998	N. Shaw
1963	R. H. Carlyle	1981	A. E. Wren	1999	D. Pruden
1964	C. J. Chapman	1982	D. A. Carswell	2000	Perry Kotkas
1965	*R. A. Boulware	1983	V. A. A. Nielsen	2001	Randy Pelletier
1966	J. Hodgkinson	1984	J. R. Hume	2002	Doug Uffen
1967	E. A. Fulmer	1985	L. C. Fichtner		

Honorary Members

Dr. George D. Garland

*Dr. J. Tuzo Wilson

Norman J. Christie

*Dr. Milton B. Dobrin

A. E. Pallister

Dr. Roy O. Lindseth

Dr. David W. Strangway

Peter J. Savage

R. H. Carlyle

*Dr. Ernest R. Kanasewich

Robert Boulware

Dr. A. Easton Wren

Sudhir Jain

Dr. Charlotte Keen

Dr. Peter Gretener

Dr. Gordon West

Dr. Ron M. Clowes

Dr. Douglas W. Oldenburg

Dr. Roy Hyndman

Dr. Larry Lines

Dr. Zoltan Hajnal

Brian Russell

Robert Comer

*Deceased

C S E G A C H I E V E M E N T S

Meritorious Service Awards

Harry J. McGrew	Earle F. Mahaffy	Ralph Lundberg
*Cecil A. Collins	Jack E. Setters	Murray Olson
*Dr. Milton B. Dobrin	Peter I. Bediz	George Kostashuk
Alexander H. McKee	William C. Stroup	Robert Grigg
Peter J. Savage	Ernie K. Shaw	Neil Rutherford
*Percy Smith	Bill Davitt	Ken Duckworth
Dr. Roy O. Lindseth	Ray Prudholme	Melvin E. Best
John Hodgkinson	George Blundun	Brian Russell
*Jack W. Bowden	Valerie A. A. Nielson	Don C. Lawton
*Hal W. Godwin	Duncan A. Carswell	Jim Brown
J. K. Morrison	P. Dennis O'Brien	John Pierce
W. N. Rabey	Judi MacDonald	Gregg Milne
Dr. A. Easton Wren	Dale Kary	*Ernest Kanasewich
Mary C. Colberg	D. K. Bruce Fenwick	Doug Uffen
A. Vern Street	Lloyd Hatlelid	Michael Enachescu
*Alan J. Ferworn	Larry Fichtner	Elaine Honsberger
Jack R. Pullen	Don Simpson	Dave Siegfried
Sudhir Jain	John Boyd	Penny Colton
*Bill Blair	Art Baptie	Norm Cooper
Harold Acheson	Bob Comer	Barry Korchinski
Bud St. Clair	Dan Hampson	George Fairs
William D. Evans	Nancy Shaw	Perry Kotkas

CSEG Medal

Ted Rozsa	Dr. Robert R. Stewart	Garry Kelman
Roy Lindseth	Hugh Stanfield	Brian Russell
Greg Davidson	Donald Chamberlain	Dr. Don Lawton
Dave Robson	John Boyd	

*Deceased

C O R P O R A T E M E M B E R S

Ace Explosives ETI Ltd.	Husky Energy
Aguila Exploration Consultants Ltd.	Iexco Canada Inc.
Allen Geophysical Consulting Ltd.	Impact 2000 Inc.
Allied Seismic Ltd.	Imperial Oil Resources
Apache Canada Ltd.	Input/Output of Canada Inc.
APL Oil & Gas (1998) Ltd.	Intercontinental Seismic Surveys
Apoterra Seismic Processing Ltd.	Kelman Technologies Inc.
Arcis Corporation	KPS Group (Canada) Ltd.
Austin Powder Ltd.	Landmark
Bertram Drilling Corp.	Lornel Consultants
BP Canada Energy Ltd.	Lynx Information Systems
Burlington Resources Canada Energy Ltd.	Matrix Geoservices Ltd.
C & C Systems	Mitcham Canada Ltd.
Canadian Forest Oil Ltd.	Murphy Oil Company Ltd.
Canadian Natural Resources Ltd.	Norex Geophysical Inc.
Century Exploration Limited	Northrock Resources Ltd.
CGG Canada Services Ltd.	Olympic Seismic Ltd.
Chevron Canada Resources	OutSource Seismic Consultants Inc.
Compton Petroleum Corporation	Oyo GeoSpace Canada Inc.
Conoco Canada Limited	Paradigm Geophysical (Canada) Ltd.
Core Lab Reservoir Technologies	Petro Canada Oil & Gas
Devon Canada Corporation	Pulse Data Inc.
ECL Canada Ltd.	Samson Canada, Ltd.
Encana Corporation	Sensor Geophysical Ltd.
Enerplus Resources Fund	Sercel Canada Ltd.
EOG Resources Canada Ltd.	Sercel Inc
Explosives Limited	Shell Canada Ltd.
ExxonMobil Canada Ltd.	Sigma Exploration Inc.
GEDCO	Statcom Ltd.
Geophysical Service Incorporated	Suncor Energy
Geo-Search Data	Synterra Technologies Ltd.
Geotech Exploration Services Ltd.	Talisman Energy Inc.
Geo-X Systems Ltd.	Taurus Exploration Ltd.
Green Square Geophysical Consulting Inc	Time Seismic Exchange Ltd.
Hampson-Russell Software Services Ltd.	Veritas GeoServices