

# Lead Isotope Age of Chondrules in the CR2 Chondrite NWA801 by a Progressive Stepwise Dissolution

Christopher R.J. Charles\* and Donald W. Davis

Jack Satterly Geochronology Laboratory, Department of Geology, University of Toronto  
Earth Sciences Centre, 22 Russell Street, Toronto, ON, M5S3B1 CANADA.

Phone: (416) 978-0658; Fax: (416) 978-3938.

\*[christopher.charles@utoronto.ca](mailto:christopher.charles@utoronto.ca)

## Summary

CR2 chondrites are a unique class of carbonaceous meteorites characterized by an abundance of metallic iron that forms multi-layered rims around silicate chondrules (Fig. 1). We have experimented with a progressive stepwise dissolution of chondrules from the CR2 chondrite NWA801 for the purpose of obtaining  $^{207}\text{Pb}/^{206}\text{Pb}$  ages from the corresponding radiogenic leachates and residues. Following an extensive pre-cleaning to remove extraneous lead, three multi-chondrule fractions (12.6, 31.5 and 35.7 mg) were leached with acids of increasing strength starting from weak HCl and ending with HF/HNO<sub>3</sub>. ID-TIMS analyses of the progressively stronger leachates (on a VG354 thermal ionization mass spectrometer in Daly and multi-dynamic-Faraday modes using a  $^{235}\text{U}$ - $^{205}\text{Pb}$ -spike) showed that both HF and HF/HNO<sub>3</sub> are efficient at extracting radiogenic Pb components from the chondrules ( $^{206}\text{Pb}/^{204}\text{Pb} = 324$  to 1114 after fractionation, blank and spike corrections). A weighted regression through the final three leaches and residues of each of the three multi-chondrule fractions (nine points total) yields a  $^{207}\text{Pb}/^{206}\text{Pb}$  isochron age of  $4564.6 \pm 1.0$  Ma (95% confidence, MSWD=1.3) assuming that the lead is a mixture between blank and primordial Canyon Diablo Troilite Pb (CDT; Fig. 2). Our age for NWA801 chondrules is identical to the  $^{207}\text{Pb}/^{206}\text{Pb}$  age of chondrules in the CR2 chondrite Acfer 059 ( $4564.7 \pm 0.6$  Ma; Amelin et al. 2002) whereas chondrules from CB chondrites are ~2 Myr younger, and those from Allende (CV3) are at most ~2 Myr older (Fig. 3). This suggests that all chondrules in CR2 chondrites formed as a result of the same nebular event and may be from the same parent body. However the complex multi-rimmed textures of the chondrules in NWA801 (i.e. Fig. 1) suggest that multiple and as yet unresolved processes were involved during their formation.

## Acknowledgements

Thanks to the Jack Satterly Geochronology Laboratory (M. Hamilton, S. Kamo, K. Kwok, B. Podstawskyj, E. Rotenberg, A. Das). Special thanks to the Royal Ontario Museum for providing NWA801 for this study (Loan #LM53334; K. Tait, I. Nicklin and the generous donor). This project is dedicated to the memory of Dr. O. Bogdanovski.

## References

(1.) Connelly, J. N., and Bizzarro, M., 2009, Pb-Pb dating of chondrules from CV chondrites by progressive dissolution: *Chemical Geology*, 259, 143-151.

(2.) Amelin, Y., Krot, A.N., Hutcheon, I.D., Ulyanov, A.A., 2002, Lead isotopic ages of chondrules and calcium-aluminum-rich inclusions: *Science*, 297, 1678-1683.

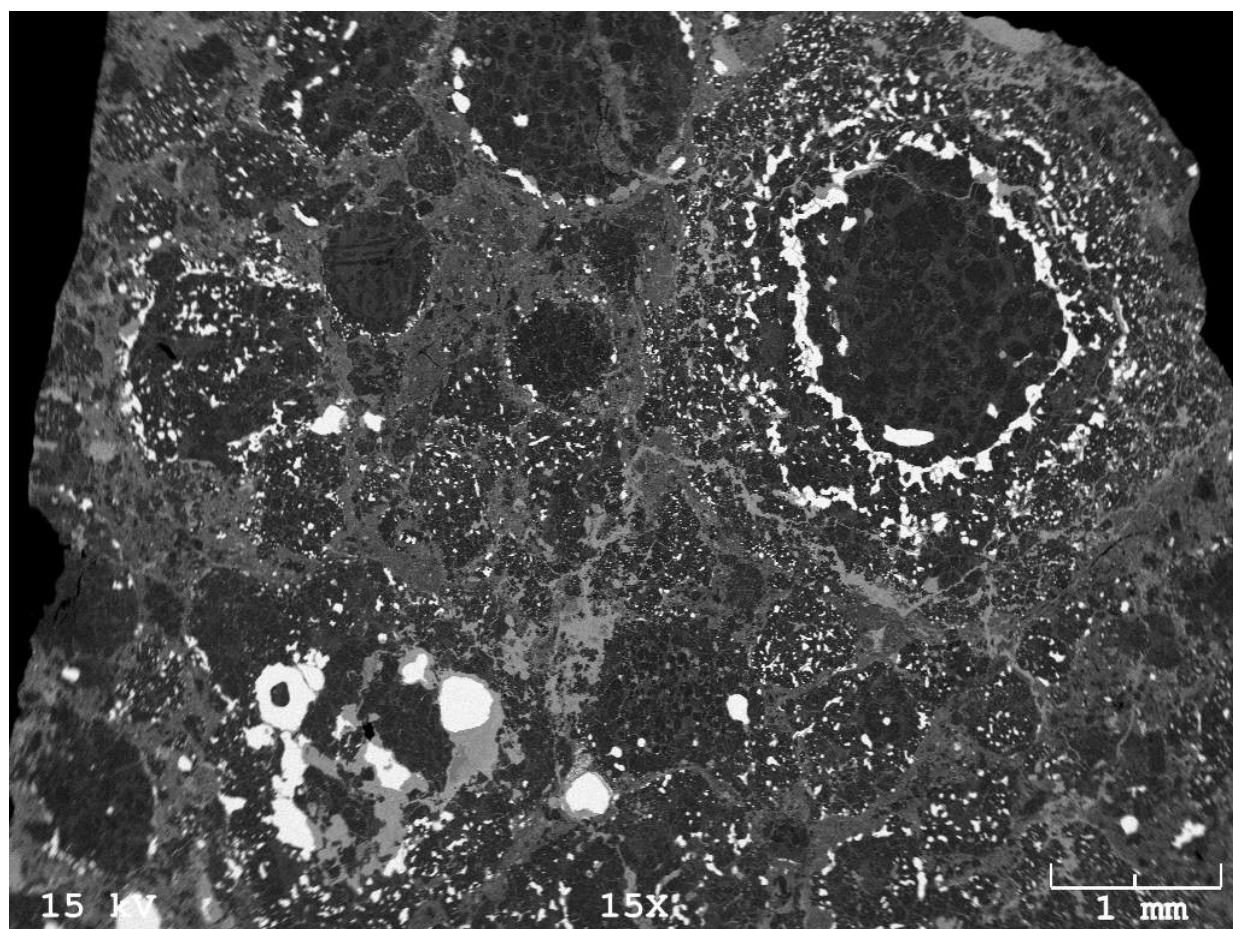
(3.) Amelin, Y., Ghosh, A., Rotenberg, R., 2005, Unravelling the evolution of chondrite parent asteroids by precise U-Pb dating and thermal modeling: *Geochim. Et. Cosmochim. Acta*, 69, 505-518.

(4.) Amelin, Y., and Krot, A., 2007, Pb isotopic age of Allende chondrules: *Met. & Plan. Sci.*, 42, 1321-1335.

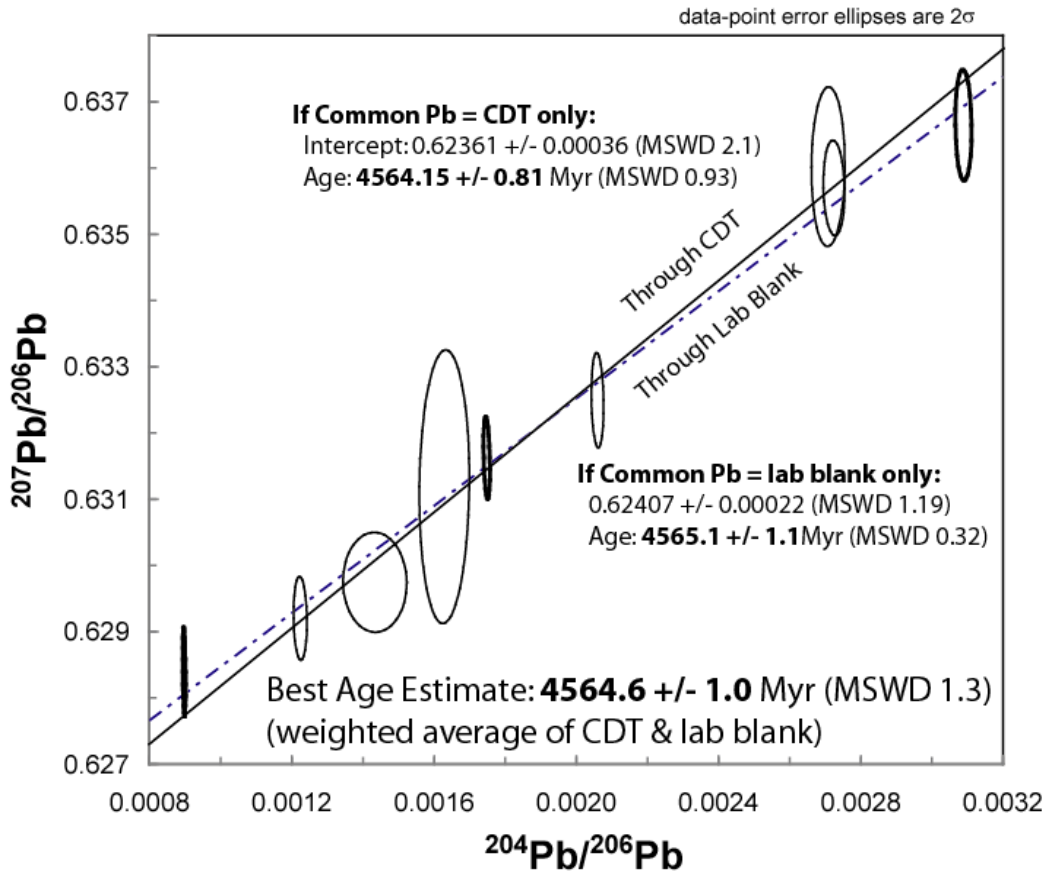
(5.) Connelly, J.N., Amelin, Y., Krot, A.N., Bizzarro, M., 2008, Chronology of the solar system's oldest solids: *Astrophysical Journal*, 675, L121-L124.

(6.) Krot, A.N., Amelin, Y., Cassen, P., Meibom, A., 2005, Young chondrules in CB chondrites from a giant impact in the early Solar System: *Nature*, 436, 989-992.

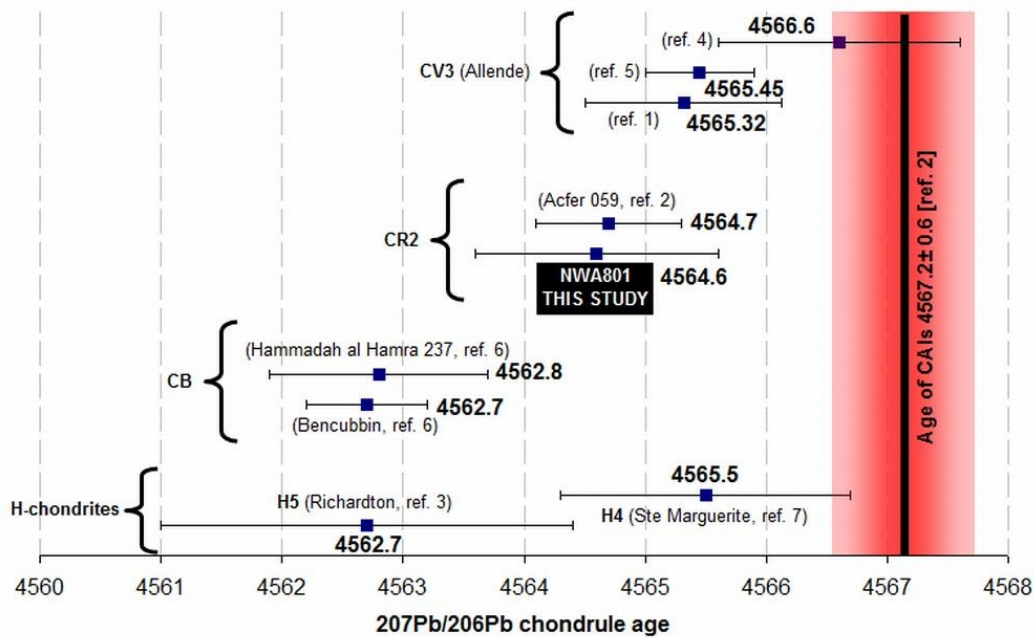
(7.) Bouvier, A., Bilchert-Toft, J., Moynier, F., Vervoort, J.D., Albarede, F., 2007, Pb-Pb dating constraints on the accretion and cooling history of chondrites: *Geochim. Et. Cosmochim. Acta*, 71, 1583-1604.



**Figure 1:** SEM-BSE image of chondrules in the CR2 chondrite NWA801. Bright regions consist of Fe-Ni. Darkest grains consist of olivine. Armoured ol-px chondrules are common, as well as complex multiply-rimmed armoured chondrules as shown.



**Figure 2:** ID-TIMS results for the nine most radiogenic leaches and residues of NWA801 chondrules. Regressions are made using IsoPlot. Errors for all ages are at 95% confidence.



**Figure 3:** Comparison of some recent chondrule lead ages organized by descending age and grouped by meteorite type for a variety of carbonaceous chondrites and two H-chondrites. The age for CAIs is overlain; all errors are  $2\sigma$ . References and meteorite names are shown.